

# ILLINOIS FIGHTING ILLINI

## POSITION OUTLOOK FOR 2009

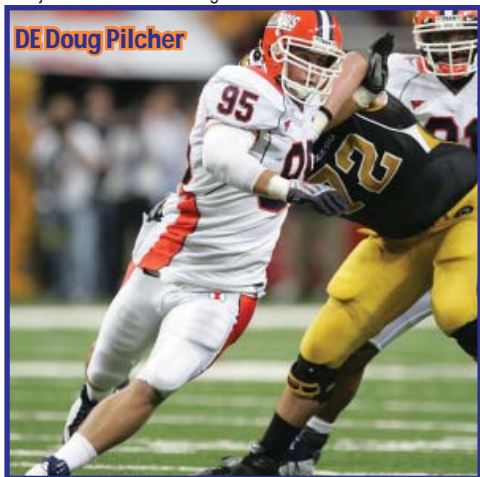
**QUARTERBACKS** - In '06 true frosh Juice Williams (PS#11) threw for just 1,489 (39.5%) with a 9-9 ratio but broke Tim Brasic's record for net rush yards by a QB (576). Williams had beaten Brasic's record by midseason. Added to the mix in '07 was athletic rFr Eddie McGee (PS#72). After Williams was KO'd vs Missouri, McGee threw for 257 which is more yards than Williams threw for in any game in his first 2 years. McGee, however, also had 4 TO's in that game. McGee came in during the 4Q vs Penn St and had a 53 yd run that set up a FG. He ran for a 4Q TD vs Wisc and had a go ahead 83 yard TD pass called back vs Iowa. He is considered to be a better passer and is faster than Juice but did not know the offense as well. After the loss to Mich, Zook opted to stick with Williams (McGee 1 pass in L/5 gm). Williams raised his completion % to 57.3 throwing for 1,743 with a 13-12 ratio. McGee had a 2-3 ratio hitting 52.7% for 444. Last year Williams made dramatic strides again. He set a Michigan Stadium record with 431 ttl yds and later set a Memorial Stadium record with 503 total yards vs Minn. Williams led the Big Ten in passing with 3,173 (57.5%) with a 22-16 ratio with 719 rush (4.1). McGee played in just 5 (9 att, 83 rush). This year both return and added to the mix are Jacob Charest (6'4" 220 rFr, PS#23), Sean Anderson (6'4" 195 So), Eddie Villinas (6'4" 235 rFr, PS#162) and true frosh Nathan Scheelhaase (PS#19). If Williams continues to improve, he will be the Big Ten's best passer.

**RUNNING BACKS** - Pierre Thomas led the Illini in rushing 3 straight years with 895 (5.9) in '04, 664 (5.2) in '05 and 755 (5.8) in '06. Rashard Mendenhall (PS#8) had 218 (4.5) as a true and in 2006 avg'd a gaudy 8.2 ypc with 640 yards. Mendenhall added 20 lbs prior to '07 (405 bench) and became the Illini's first ever Big Ten Off MVP with 1,681 (6.4). He broke the school's single season record in rushing yards (Antoine Harris, 1,330, '02) and TD's (Howard Griffith, 15, '90) while posting eight 100 yard efforts. Unfortunately he left early for the NFL (#1DC PIT) and was the first IL #1DC RB since Jim Grabowski in 1966. This unit was my biggest concern on the team LY as the top returnee was Daniel Dufrene (PS#207JC) who is 24 lbs lighter than Mendenhall and had 294 (6.3) in '07 when three of the top 5 rushers were either QB's or WR's. Troy Pollard (PS#66) had 148 (6.4) in the first 4 of '07 but RS. Last year Dufrene (4.41 spd) had 396 (6.6) in the first four, but had just 267 (4.6) the rest of the year. True frosh Jason Ford (PS#32) had 172 vs Indy but just 122 in the other 11. True frosh Mikel Leshoure (PS#63) rushed for 126 (3.6) before having his jaw broken by a teammate. Surprisingly, Pollard had just 37 (6.2) playing in 6 while still recovering from '07's knee inj. This year the unit returns intact and not listed below are FB's Zach Becker (6'3" 252 So) and Mark Burgess (5'9" 200 So) and Pollard. With added talent and much more experience, this unit can only improve.

**RECEIVERS** - Zook started building this talented group in '06 by signing Jeff Cumberland (PS#13), who drew comparisons to the 49ers Vernon Davis (1st Tm AA at Maryland, #1DC). Cumberland was #3 at TE as a true with 232 (14.5). Dropped passes were a huge problem for this unit throughout '06. Soph Kyle Hudson led with 403 (13.4) and former walk-on Jacob Willis was #2 with 313 (19.6). Everyone ret'd in '07 but I named true frosh PS#1 WR Arreluios Benn 2nd Tm Big Ten in my preseason magazine. Benn suffered a shoulder injury in Aug and was not 100% all year. He was still the Big Ten Frosh of the Year (first here since Simeon Rice in '92) and broke the Illini frosh rec record (676, 12.5). The injury plagued Hudson dropped to 127 (10.6) while Willis was #2 with 330 (15.0). Cumberland avg 20.2 on his 12 rec after a midseason move to WR. Last year they only had to replace Willis and Hudson. Benn improved to 1,055 (15.7) and Cumberland was #3 with 352 (17.6). Will Judson (PS#434JC) was #2 with 401 (19.1) and true frosh Jenkins avg 26.1 ypc with 3 TD's. TE Mike Hoomanawanui was #4 with 312 (12.5). This year they must replace Judson (10 st) but add Florida transfer

Jarred Fayson (PS#9QB). This unit is more experienced with added talent and now has 6 VHT's.

**DEFENSIVE LINE** - In '06 the Illini had all 5 starters returning. They did shuffle the O-line and one '05 starter was not even on the 2 deep. Thanks to mobile QB Juice Williams, the Illini led the Big Ten in rushing with 189 (5.2). In '07 they had to replace 2 starters and 3 backups but all five OL started all 13 and they improved to 257 ypg (#1 in Big Ten) avg 5.6 ypc while decreasing their sacks to 16 (4.9%). LG Martin O'Donnell became the first 1st Tm AP AA here since LB Kevin Hardy in 1995. Last year they had to replace O'Donnell and one other starter and #1DC RB Mendenhall. The numbers dropped to 170 ypg rush (4.4). This year they lose LT Xavier Fulton (12 st, 2Y str, #5DC TB) and C Ryan McDonald (12 st, 4Y str). Surprisingly this unit has just 1 VHT in its starting 5.



DE Doug Pilcher

**DEFENSIVE LINE** - The Illini had an experienced defensive front in '05 but surprisingly allowed 5.5 ypc rush, their worst total of the modern era (D had 11 sk). In '06 they had to replace two starters but made remarkable improvements to 128 ypg (3.3). They had 7 of the top 8 back in '07 but slipped to 132 ypg (3.7) although the D had 40 sacks (21 in '06). Last year they only had to replace one starter but surprisingly the unit slipped a little more to 153 ypg (4.0) although the Illini led the Big Ten per game in ttl and sacks (32). This year they lose DT David Lindquist (12 st, 44 tkl, 4 sk), DE Derek Walker (11 st, 33 tkl, 6 sk) and DE Will Davis (10 st, 36 tkl, 3.5 sk, #6DC ARZ). Not listed below is Wisdom Onyeghule (6'3" 265 So) They do return 2 who have been full-time starters in DT Josh Brent and DE Doug Pilcher and while the line looks weaker, they could actually improve upon last year's rush numbers.

**LINEBACKERS** - In each of the past 3 years, an Illinois MLB has led the Big Ten in tkl/gm with J Leman in '06 & '07 and Brit Miller in '08. Last year they had to replace their #1 and #2 tkl'rs and Miller was the team's top def player. This year they lose Miller (12 st, 1st Tm B10), Rodney Pittman (8 st, 53 tkl), Sam Carson (3 st, 36 tkl) and Conor Gillen (3 tkl). They return their #3 tkl'r Martez Wilson (moved to MLB in spg) which makes them as experienced as last year.

**DEFENSIVE BACKS** - The Illini finished a frightening #118 in my pass D rankings in 2005 allowing a 27-4 ratio. They had 3 starters back in '06 and added true frosh Vontae Davis (PS#50), who quickly became their top cover CB. The Illini made a huge climb to #39 allowing 55.5% with an 11-10 ratio. In '07 they had 3 starters back but surprisingly slipped to #52. Last year they had to replace two multi-year starting S's as well as a backup S (57 tkl).

Zook brought in PS#35JC Donsay Hardeman who started 8 (miss 4). CB Miami Thomas (1 st) was lost in Wk 2 to an ACL. One of the two returning starters was NFL bound Davis who had an uneven season. Due to the inexp Illinoi dropped all the way to #85. This year Davis left early for the NFL draft (#1DC MIA, 11 st, #2 tkl'r) but 7 return with starting experience and despite the loss of their top guy, they should greatly improve upon '08's finish.

**SPECIAL TEAMS** - Ron Zook used to be a ST coach in the NFL (PIT) so its surprising that his first two teams here ranked #111 and #116 in my ST rankings. I mentioned that with everyone back in '07, they should make significant improvement and they did moving up to #42. Last year they only had to replace their K. RFr Matt Eller won a 3-way battle and hit a solid 15 of 20 (long 51). Three players combined for 11 TB's on KO's. Anthony Santella who avg 37.7 (33.1 net) in '07, raised his avg to 39.4 (31.6 net). Despite a plethora of VHT's, the Illini were avg in the return game and fell to #95. Basically everyone returns this year and much like '07, I expect a much improved ST ranking.

**COACHES** - Ron Zook had to replace the ever popular Steve Spurrier at Florida and was under fire from day one. He finished 23-14 in his three seasons before being shown the door. He's an excellent recruiter and gained a lot of respect in '06 when Florida's team, comprised mostly of Zook's recruits, won the National Title. He now enters his 5th year here. This year he must replace his four year OC Mike Locksley (HC New Mex). The new OC is Mike Schultz who was the OC at TCU for the last 8 years. The Frogs had a balanced offense last year avg 220 ypg rushing and 201 passing and were #21 in the FBs at 33.6 ppg. The 3rd year co-DC's are Dan Disch (5th yr overall) and Curt Mallory (5th yr).

## PHIL'S FORECAST

Illinois has won 15 Big Ten Titles including 2001 when they went a stunning 10-1. They were ranked #7 before losing in the Sugar Bowl. It was their first outright Big Ten Title since 1983. Illinois was just 13-45 the next five years and finished above .500 in Big Ten play just once from 1995-2006. In '07 I called the Illini my #2 Most Improved Team. A big part of the reason was that they were far better than their 2-10 record in '06. In '06 they had outgained foes by an avg of 346-310 but were -15 in TO's and had 5 net close losses. They could have easily beaten Penn St and Wisc on the road despite their 1-7 conf record. The Illini did not disappoint me. They got their first win over a #1 team since 1956 when they upset Ohio St on the road. Illinois, which had a combined 8 wins the previous four years actually won 9 and got to the Rose Bowl for the first time since 1983. Unfortunately, USC tied a Rose Bowl scoring record as the Illini lost 49-17. Last year I was not high on the Illini. In fact, I didn't make too many friends in Champaign when I did not have Illinois ranked in my preseason Top 50 even though the Fighting Illini were #20 in the preseason AP poll. Illinois was picked 3rd in the Big Ten preseason poll. I pointed out that the '07 Illini team had just 2 starts lost last year (tied #118 FBs) plus they were only +25.9 ypg despite their 6-2 B10 record. Illinois had not had B2B winning seasons since 1989-90 and the 24 lettermen lost were most in the Big Ten. They also had to play Penn St, Mich and Wisc all on the road and I questioned who would replace #1DC RB Mendenhall. UI opened '08 with a 10 pt loss to #6 Missouri. They needed a 27 yd FG with 1:40 left to get past UL at home. They gave PSU one of their toughest tests only being outgained 422-372 in Happy Valley to drop to 2-2. Their 45 pts vs Mich was their most ever in Ann Arbor and despite trailing 14-3, they won. They had a 550-312 yd edge vs Minn but were SOD at the 1 and lost by 7 at home. UI got their most points ever in a Big Ten HG in a 55-13 win vs Indiana. They led UW 17-10 but lost by 10 on the road. After beating Iowa 27-24, they moved to 5-4 but lost to WM at Ford Field. They outgained OSU 455-354 rolling up 292 yards at the half but lost by 10. In a must win game to end the season, NW kept them out of a bowl, 27-10. Much like '07, there are a lot of factors pointing to a resurgence. Despite a 3-5 conf record they were +86.5 ypg (2nd best!). There were -6 in TO's and had 27 starts lost to inj (tied #30 FBs). They have 13 ret starters including QB Williams. The D led the Big Ten in sacks/gm and ttl/gm. The Illini not only make my MIT list for the 2nd time in 3 years, but I also place them on my Surprise Team List (Darkhorse National Title contender), so I'll look for even better results than their '07 turnaround with one of my 9 sets of power ratings calling for an unbeaten season.

## TOP NEWCOMERS FOR 2009

WR Terry Hawthorne 6-0 170 PS#4  
RB Justin Green 5-11 178 PS#8DB  
QB Nathan Scheelhaase 6-3 185 PS#19  
LB Aaron Gress 6-0 230 PS#51JC  
OL Lendell Buckner 6-3 340 PS#39  
OL Leon Hill 6-4 320 PS#43  
RB Bud Golden 6-0 190 PS#47  
OL Andrew Carter 6-4 272 PS#61  
DL Michael Buchanan 6-6 220 PS#92  
RB Greg Fuller 6-2 240 PS#100  
WR Steve Hull 6-2 187 PS#112  
DB Tommie Hopkins 5-11 175 PS#175  
OL Hugh Thornton 6-5 285 PS#177  
OL Jake Feldmeyer 6-4 265 PS#237  
DB Joell Thrash 6-0 185 PS#244  
DL Akeem Spence 6-1 280 PS#274  
LB Eric Watts 6-1 215 PS#238  
TE Justin Lattimore 6-3 215 PS#76  
DB Walter Aikens 6-1 185 PS#45  
DL Tim Kynard 6-3 240 PS#538

## OFFENSE JERSEY # IN BLUE 2009 PROJECTED STARTING LINEUP JERSEY # IN BLUE DEFENSE

**QB 7 JUICE WILLIAMS SR.** 6-2 235 PS#11. 22 st '06-'07, 3232 (48%) 22-21 ratio, 1331 rush. 2nd Tm B10 LY. 3173 (58%) 22-16, 719 rush. Eddie McGee (6'4" 210 Jr) PS#72. 503 pass 2Y.  
**RB 21 JASON FORD SO.** 6-0 230 PS#32.5 st, 294 (3.6) true. 22 Daniel Dufrene (5'11" 205 Sr) 7 st, 957 (5.8) 2Y. Mikel Leshoure (6'0" 225 So) PS#63. 226 (3.6) LY. Justin Green PS#8DB.  
**WR 9 ARRELUIOS BENN JR.** 6-2 220 PS#1. 12 st, 676 (12.5) true. 1st Tm B10 LY. 1055 (15.7). 82 Fred Sykes (6'0" 185 So) 6 st, 156 (13.0) true. Jake Ramsey (5'11" 190 rFr) PS#34DB.  
**WR 11 Jarred Fayson Jr.** 6-0 215 PS#9QB. FL trans. 3 st, 148 (12.3) at FL '07.  
**8 AJ Jenkins (6'0" 185 So) PS#54.** 287 (26.1) true. 1 Cordale Scott (6'3" 215 So) PS#29.  
**WR 17 JEFF CUMBERLAND SR.** 6-5 255 PS#13TE. 11 st, 827 (17.2) 3Y. Terry Hawthorne (6'0" 170 Fr) PS#4. Chris Duval (5'11" 175 Sr) 4 st, 156 (15.6) LY. Chris James (6'0" 195 Jr) PS#23.  
**TE 16 MIKE HOOMANAWANUI SR.** 6-5 270 PS#70. 15 st, 376 (12.5) 3Y. 83 Hubie Graham (6'4" 245 So) PS#32. 1 st, 12 gm, 2 rec true. 40 London Davis (6'4" 255 rFr) PS#39.  
**C 62 ERIC BLOCK SR.** 6-3 290 PS#132. 12 st LG, 789 snaps LY. 81 Tyler Sands (6'5" 295 rFr) PS#78. 89 Ryan Sedlacek (6'4" 300 rFr) PS#120. LS Tad Keely (6'1" 225 Jr).  
**RG 52 JON ASAMOJO SR.** 6-5 315 PS#370. 13 st. RG. 991 snaps '07. HM B10 LY. 126 RG. 852 snaps. 73 Jack Cornell (6'5" 315 So) PS#62. 1 gm. Garrett (6'6" 310 So) PS#126.  
**LG 76 GRAHAM POCIC rFr.** 6-7 320 PS#23. 86 Randall Hunt (6'6" 320 Jr) PS#391. 7 gm as bkup LT. Hugh Thornton (6'5" 285 Fr) is PS#177. Jake Feldmeyer is PS#237.  
**RT 21 JEFF ALLEN SO.** 6-5 310 PS#141. Last 9 st at RT as true, 628 snaps.  
**78 Ryan Palmer (6'7" 310 Jr) PS#121.** 3 st RT, 6 gm as rFr. Leon Hill (6'4" 320 Fr) PS#43.  
**LT 70 Corey Lewis So.** 6-6 315 PS#150. 4 gm, 94 snaps as true. 79 Craig Wilson (6'5" 320 So) PS#82. 7 gm, 38 snaps LY. Andrew Carter (6'4" 272 Fr) PS#61.  
**K 84 MATT ELLER SO.** 6-2 210 PS#74. 15 of 20 FG. L51. 39-41 xp, 4/17B KO.  
**19 Derek Dimke (6'0" 180 So) PS#20** 2 KO true. Mike Cklamowski (6'4" 250 Sr), 11 TB/86 KO L3Y.

**DE 99 Jerry Brown Jr.** 6-4 265 PS#78. 13 tkl, 4 tfl 2Y. 90 Antonio James (6'5" 255 Sr) 20 tkl, 3 tfl 3Y. Glenn Foster (6'4" 270 rFr) PS#60. Raheem Smith (6'1" 265 Sr) PS#104. 3 st FB.  
**DT 93 Corey Luget So.** 6-3 290 PS#16TE. 2 st, 26 tkl, 5 tfl true. 56 Sirod Williams (6'0" 295 Sr) PS#201LB. 4 st, 23 tkl, 2 tfl '05-'07. Inj LY. 72 Reggie Ellis (6'2" 285 rFr) PS#26.  
**DT 92 JOSH BRENT JR.** 6-2 315 PS#25.8 st, 42 tkl, 10.5 tfl 2Y. Daryle Ballew (6'1" 310 So) PS#131. Ugochukwu Uzodinma (6'4" 260 rFr) PS#206. Antonio Jackson (6'2" 285 Jr) PS#111.  
**DE 95 Doug Pilcher Sr.** 6-5 265 PS#96. 11 st, 24 tkl, 6.5 tfl '06. 9 st, 25 tkl, 7 tfl '07. 5 st, 12 tkl, 5.5 tfl LY. Clay Nurse (6'3" 260 Jr) PS#254. 9 tkl. Whitney Mercilus (6'3" 255 rFr) PS#144.  
**SLB 38 Ian Thomas So.** 6-0 225 4 tkl rFr. 42 Aaron Gress (6'0" 230 Jr) PS#51JC.  
In for spg. 48 Nate Palmer (6'3" 230 rFr) PS#20TE. Eric Watts (6'1" 215 Fr) PS#238.  
**MLB 2 MARTEZ WILSON JR.** 6-4 240 PS#7. 29 tkl, 3 tfl true. 7 st, 73 tkl, 5.5 tfl LY. 54 Justin Staples (6'4" 225 rFr) PS#69. 51 Evan Frierson (6'2" 225 rFr) PS#368. Dane Lundeen (5'11" 205 rFr).  
**WLB 33 Russell Ellington So.** 6-2 225 PS#93WR. 1 st, 8 tkl as true. 53 Dustin Jefferson (6'0" 240 Jr) PS#67. 5 tkl, 1 gm LY. 18 Nate Bussey (6'2" 220 Jr) PS#46QB. 1 st, 30 tkl 2Y.  
**CB 3 Tavon Wilson So.** 6-0 195 PS#140. 1 st, 11 tkl true. 2Y. 25 Ashante Williams (5'10" 195 rFr) PS#138RB. 8 Patrick Nixon-Youman (5'10" 165 Fr) PS#154RB. Grayshyrt '08.  
**CB 28 DERE HICKS SR.** 5-10 175 13 st, 52 tkl, 5 pbu, 2 int '07. 12 st, 43 tkl, 4 tfl, 5 pbu, 1 int LY. 14 Miami Thomas (5'11" 175 So) PS#85. 2 st, 20 tkl 2Y. Antonio Gully (6'1" 180 Jr) 3 tkl LY.  
**SS 24 BO FLOWERS JR.** 6-2 215 PS#31QB. 5 tkl true. 3 st, 23 tkl LY. 20 Garrett Edwards (6'2" 210 Jr) PS#93.5 st, 20 tkl LY. 32 Supo Sanni (6'3" 215 So) PS#69WR. 9 tkl true.  
**FS 4 DONSAY HARDEMAN SR.** 6-2 210 PS#35JC. 8 st, 44 tkl LY. 31 Travon Bellamy (6'0" 205 Jr) PS#146. 12 st, 68 tkl, 5 pbu, 2 int 2Y. Kevin Johnson (6'1" 190 Fr). Nattiel Perkins (5'11" 200 rFr).  
**P 87 ANTHONY SANTELLA JR.** 6-2 190 PS#71. 64 punts, 37.7 avg, 33.1 tm net in '07. 53 punts, 39.4 avg, 31.6 net LY. 37 Kyle Yelton (6'0" 190 Sr) PS#54. 1 punt, 39 yds '07.

# ILLINOIS FIGHTING ILLINI

Champaign-Urbana, Illinois  
Weather (217) 351-2900

**RON ZOOK (Career 41-44)**  
5th Year at Illinois  
Bowls: 0-3  
Florida '02-'04

Date	Opponent	Turf	Line	Final Score		W
				UI	Opp	
Sep. 5	† Missouri (St Louis)	A				
Sep. 12	Illinois St	A				
Sep. 19						
Sep. 26	at Ohio St	A				
Oct. 3	Penn St	A				
Oct. 10	Michigan St (HC)	A				
Oct. 17	at Indiana	A				
Oct. 24	at Purdue	G				
Oct. 31	Michigan	A				
Nov. 7	at Minnesota	A				
Nov. 14	Northwestern	A				
Nov. 21						
Nov. 27	at Cincinnati (Fri)	A				
Dec. 5	Fresno St	A				

**CAREER PASSING LEADERS**  
1. Jack Trudeau 8,725 '81-'85 1. Robert Holcombe 4,105 '94-'97 1. David Williams 3,392 '83-'85  
2. Kurt Kittner 8,722 '98-'01 2. Antonio Harris 2,985 '99-'02 2. Brandon Lloyd 2,583 '99-'02  
3. Jason Verduzco 7,532 '89-'92 3. Thomas Rooks 2,887 '82-'85 3. Walter Young 2,382 '98-'02

**CAREER RUSHING LEADERS**  
1. Robert Holcombe 4,105 '94-'97 1. David Williams 3,392 '83-'85  
2. Kurt Kittner 8,722 '98-'01 2. Antonio Harris 2,985 '99-'02 2. Brandon Lloyd 2,583 '99-'02  
3. Jason Verduzco 7,532 '89-'92 3. Thomas Rooks 2,887 '82-'85 3. Walter Young 2,382 '98-'02

**CAREER RECEIVING LEADERS**  
1. Robert Holcombe 4,105 '94-'97 1. David Williams 3,392 '83-'85  
2. Kurt Kittner 8,722 '98-'01 2. Antonio Harris 2,985 '99-'02 2. Brandon Lloyd 2,583 '99-'02  
3. Jason Verduzco 7,532 '89-'92 3. Thomas Rooks 2,887 '82-'85 3. Walter Young 2,382 '98-'02

Fifth time in 8 seasons these 2 have opened in St Louis w/the Illini losing all 4 prior. LY the teams combined for 1,081 yds & QB Williams had 451 yds & 5 TD passes.

Illinois is 5-0 vs current MVF Conf schools incl 2-0 vs Ill St (last mtg '03, 49-22). The Redbirds went 3-8 LY incl a 35-10 loss at Marshall (only outgained 390-327).

The visitor has won 8 of 9. Illinois has won 3 of 4 in Columbus including '07 when the Bucks were #1. Illinois outgained OSU 455-354 in last year's 30-20 loss.

Illinois is 3-13 vs PSU but did win last time in Champaign. Illini led 14-7 LY then trailed 31-24 early in the 4Q. They did gain 372 yds which was the most vs PSU LY (reg ssn).

The Illini snapped a 9 game series losing streak in their last meeting ('06, 23-20). The teams fought when the Illini planted a tm flag in Spartan Stadium after pulling a 26 pt upset.

Last year's 55-13 win was 1st back-to-back wins vs the Hoosiers S/'01 & '02. It was the largest margin of victory & most Illini pts in the series since 1914 (51-0).

Ill has dropped 4 straight to Purdue being outscored by 22 ppg. Last trip here ('05) was Zook's 1st yr & they needed a FG with 7:37 left to avoid a shutout in the 37-3 loss.

Ill last beat Michigan at home in '83 (0-9-1 since). LY Juice Williams had 431 yds off (tied UM opp record). The Illini has not beaten UM in B2B seasons since '57 & '58.

Illinois is just 2-7 vs Minnesota but did win in their last trip there ('07, 44-17). LY Juice had a Memorial Stadium record 503 yds of offense but was sk'd 5 times.

The Illini are 1-5 vs the Wildcats with the win 2 years ago at home. Last year UI trailed 13-0 at HT. The FD's finished even (21-21) & the ydg was almost even (339-335).

Bonus: The Sweet Sioux Tomahawk Trophy (Ill vs NU) was retired LY ('45-'08).

First meeting. The Illini have split 4 Big East games the last 4 years. The Illini are 2-10 visiting a non-Big Ten BCS team but did win their last game (Syracuse '07).

First meeting. UI is 2-2 vs the WAC. They faced SJS in '05 scoring 40 unanswered pts with a 49-231 yd edge. First time UI has finished the ssn w/a non-conf gm S/'42!

**ZOOK AT ILLINOIS/OVERALL**  
18-30 / 41-44 SU 2-4 / 7-8 Vs Top 10  
12-13 / 25-19 Home 3-13 / 10-23 Vs Top 25  
6-13 / 14-18 Away 2-6 / 3-12 Vs BCS Tms  
0-4 / 2-7 Neutral 0-3 / 2-5 Off A Bye  
10-22 / 26-30 Vs Conf 7-19 / 15-23 Off A Loss

**2008 RECORD:** (5-7)  
**RETURNING STARTERS:**  
**OFFENSE:** 8\*  
**DEFENSE:** 5

**LETTERMEN:**  
**Returning:** 46 (22,20,4)  
**Lost:** 17 (7,9,1)

**2008 AVERAGE ATTENDANCE:** 61,707 (#30)  
**BIG TEN**



TE Mike Hoomanawanui

## STADIUM: MEMORIAL STADIUM (62,870) (#37) PLAYING SURFACE: ARTIFICIAL (FieldTurf)

	2000	2001	2002	2003	2004	2005	2006	2007	2008	9Yr Total
<b>Straight Up</b>	5-6	10-2	5-7	1-11	3-8	2-9	2-10	9-4	5-7	42-64
<b>Home</b>	4-2	6-0	3-3	1-5	3-4	2-4	1-6	5-1	4-2	29-27
<b>Away</b>	1-4	4-1	2-3	0-5	0-4	0-5	1-4	4-1	1-3	13-30
<b>Neutral</b>	0-0	0-1	0-1	0-1	0-0	0-0	0-0	0-2	0-2	0-7
<b>vs Conf</b>	2-6	7-1	4-4	0-8	1-7	0-8	1-7	6-2	3-5	24-48
<b>vs Non-Conf</b>	3-0	3-1	1-3	1-3	2-1	2-1	1-3	3-2	2-2	18-16
<b>ATS</b>	4-7	7-5	7-5	1-10	5-5	4-7	5-6	7-5	4-7	44-57
<b>Home Fav</b>	1-3	3-3	2-1	0-1	1-1	1-0	0-4	2-1	2-2	12-16
<b>Home Dog</b>	2-0	0-0	2-1	0-4	3-1	2-3	2-0	1-1	0-1	12-11
<b>Away Favorite</b>	1-1	2-0	0-1	0-1	0-0	0-0	0-1	3-1	0-2	6-7
<b>Away Dog</b>	0-3	2-1	3-1	1-3	1-3	1-4	3-1	1-0	2-0	14-16
<b>Neutral</b>	0-0	0-1	0-1	0-1	0-0	0-0	0-0	0-2	0-2	0-7
<b>vs Conf</b>	3-5	5-3	5-3	0-8	5-3	1-7	5-3	6-2	4-4	34-38
<b>vs Non-Conf</b>	1-2	2-2	2-2	1-2	0-2	3-0	0-3	1-3	0-3	10-19
<b>Off SU Win</b>	3-2	5-5	3-1	1-0	2-1	2-0	0-2	7-2	1-4	24-17
<b>Off SU Loss</b>	1-4	1-0	4-3	0-9	3-4	1-7	5-4	0-2	3-2	18-35



YR	BOWL/TM RANK	LINE	OPPONENT	SCORE	LAST 5 BOWL GAMES
92	Holiday	E	Hawaii	17-27	
94	Liberty	-7	East Carolina	30-0	
99	Micronpc.com	+2	Virginia	63-21	
01	Sugar - #7	+2	LSU - #12	34-47	
07	Rose - #13	+14	USC - #6	17-49	

## 2008 STATISTICAL LEADERS

RUSHING	ATT	GAIN	LOST	NET	TD	AVG	PLAYER	TKL	SKS	TFL	PBU	INT	
Juice Williams	175	923	204	719	5	4.1	Brit Miller	132	6	9.5	8	2	
Daniel Dufrene	117	690	27	663	0	5.7	Vontae Davis	78	0	7	8	1	
Jason Ford	81	339	45	294	8	3.6	Martez Wilson	73	3	2.5	3	0	
Mikel Leshoure	35	140	14	126	1	3.6	Rodney Pittman	53	1	2.5	0	0	
Arrelious Benn	23	119	18	101	2	4.4	Travon Bellamy	53	0	3	0	0	
Eddie McGee	14	106	23	83	0	5.9	David Lindquist	44	4	3.5	1	0	
Troy Pollard	6	47	10	37	1	6.2	Donsay Hardeman	44	0	0.5	1	1	
PASSING	ATT	COMP	PCT	YDS	TD	INT	AVG	PLAYER	TKL	SKS	TFL	PBU	INT
Juice Williams	381	219	57.5	3173	22	16	8.3	Will Davis	36	3.5	3.5	2	0
Eddie McGee	9	4	44.4	59	0	0	6.6	Sam Carson	36	0	3	1	0
RECEIVING	REC	YDS	AVG	TD	LONG	PLAYER	TKL	SKS	TFL	PBU	INT		
Arrelious Benn	67	1055	15.7	3	54	Josh Brent	34	1.5	7	0	0		
Will Judson	21	401	19.1	2	65	Derek Walker	33	6	1	0	1		
Jeff Cumberland	20	352	17.6	4	77	Corey Liuget	26	1.5	3.5	1	0		
Michael Hoomanawanui	25	312	12.5	2	25	Bo Flowers	23	0	1	0	0		
AJ Jenkins	11	287	26.1	3	54	Doug Pilcher	21	2.5	3.5	0	0		
Daniel Dufrene	30	271	9.0	2	57	Nate Bussey	21	0	0	2	0		
Chris Duvall	10	156	15.6	4	26	Garrett Edwards	20	0	0	0	0		
Fred Sykes	12	156	13.0	1	50	Tavon Wilson	11	0	0.5	1	0		
Jason Ford	9	79	8.8	0	14	Clay Nurse	9	1	0	0	0		
Mikel Leshoure	6	66	11.0	0	14	Supo Sanni	9	0	0	0	0		
PUNTING	NO	YDS	AVG	FC	NET	BLK	INT	PLAYER	TKL	SKS	TFL	PBU	INT
Anthony Santella	53	2088	39.4	8	31.6(t)	1	13	Arrelious Benn	15	114	7.6	0	0
KICKING	XP	1-29	30-39	40-49	50+	TOTAL	LONG	PLAYER	TKL	SKS	TFL	PBU	INT
Matt Eller	39-41	6-6	1-4	7-9	1-1	15-20	51	AJ Jenkins	22	490	22.3	1	0
								Arrelious Benn	20	398	19.9	1	0

## OFFENSE - LAST 7 YEARS - DEFENSE

RET	OFF	TOTAL	OFF	OFF	OFF	OFF	OFF	SKS	TOTAL	RET	DEF	TOTAL	DEF	DEF	DEF	DEF	DEF	SKS	
STS	PTS	OFF	RUSH	YPC	PASS	PASS	YPP	VS	TURN	STS	PTS	DEF	RUSH	YPC	PASS	PASS	YPP	BY	
6*	28.7	439	170	4.4	269	56.7	15.3	25	-6	2008	6	26.6	350	153	4.0	197	58.5	13.2	32
7*	27.8	425	257	5.6	168	56.3	15.3	16	-2	2007	9	21.8	377	132	3.7	245	59.3	17.3	40
8*	19.6	345	189	5.2	157	42.2	17.6	30	-15	2006	9	26.8	310	128	3.3	182	55.5	11.6	21
7*	17.0	355	158	4.0	196	59.8	20.9	32	-11	2005	7	39.5	469	234	5.5	235	67.0	11.9	10
8*	21.8	338	153	4.2	185	56.8	15.5	24	-6	2004	5	29.4	424	194	4.6	230	64.1	14.4	12
6*	16.9	340	111	3.5	230	60.8	20.1	21	-18	2003	7	33.2	426	224	4.7	202	60.4	12.9	24
7	28.8	446	164	4.3	282	56.8	15.5	24	-8	2002	7	25.6	420	190	4.3	230	56.2	16.4	26

## 2008 STATS BY GAME

UI 2008	OPPONENT	FD	Rush-YDS	AVG	CO-ATT	YDS	VS	SKS	FD	Rush-YDS	AVG	CO-ATT	YDS	SKS	TURN
66,441	† Missouri	24	35-81	2.3	26-42	451	5	28	37-226	6.1	26-45	323	1	0	
60,131	E Illinois	29	53-399	7.5	17-27	134	0	11	37-176	4.8	7-17	102	4	-2	
58,632	Louisiana	18	44-194	4.4	13-25	147	1	19	34-87	2.6	25-35	200	3	+1	
109,626	at Penn St	19	42-189	4.5	13-24	183	1	24	44-241	5.5	14-20	181	1	-1	
109,750	at Michigan	19	47-191	4.1	13-26	310	0	17	35-69	2.0	18-35	250	4	+2	
62,870	Minnesota	25	33-88	2.7	26-42	462	5	16	34-116	3.4	19-27	196	3	-2	
62,870	Indiana	27	44-292	6.6	16-22	271	2	18	44-141	3.2	12-29	172	4	+1	
81,241	at Wisconsin	15	30-88	2.9	17-32	221	2	14	45-163	3.6	12-22	174	4	-2	
62,870	Iowa	14	28-60	2.1	22-37	272	0	21	40-138	3.5	11-29	191	6	0	
12,865	† W Michigan	21	30-115	3.8	20-45	328	2	20	28-64	2.3	28-40	301	2	-1	
62,870	Ohio St	25	35-214	6.1	20-34	241	2	16	52-305	5.9	6-10	49	0	-1	
32,166	at Northwestern	21	39-123	3.2	20-37	212	5	21	34-109	3.2	22-33	230	0	-1	
<b>TOTALS</b>		<b>257</b>	<b>460-2034</b>	<b>4.4</b>	<b>223-393</b>	<b>3232</b>	<b>25</b>	<b>225</b>	<b>464-1835</b>	<b>4.0</b>	<b>200-342</b>	<b>2369</b>	<b>32</b>	<b>-6</b>	
<b>AVERAGES</b>		<b>21.4</b>	<b>38-170</b>	<b>4.4</b>											