

NORTH CAROLINA TAR HEELS

Chapel Hill, North Carolina
Weather (919) 515-8225

Butch Davis (Career 63-33)
3rd Year at N Carolina Bowls: 4-1
Miami, FL '95-'00

Date	Opponent	Turf	Line	Final Score		W
				NC	Opp	
Sep. 5	The Citadel	G				
Sep. 12	at Connecticut	G				
Sep. 19	East Carolina	G				
Sep. 26	at Georgia Tech	G				
Oct. 3	Virginia	G				
Oct. 10	Georgia Southern	G				
Oct. 17						
Oct. 22	Florida St (Thur)	G				
Oct. 29	at Virginia Tech (Thur)	G				
Nov. 7	Duke (HC)	G				
Nov. 14	Miami, FL	G				
Nov. 21	at Boston College	A				
Nov. 28	at NC State	G				
Dec. 5						

CAREER PASSING LEADERS
1. Darian Durant 8,755 '01-'04
2. Ronald Curry 4,987 '98-'01
3. Jason Stanicek 4,683 '91-'94

CAREER RUSHING LEADERS
1. Amos Lawrence 4,391 '77-'80
2. Mike Voight 3,971 '73-'76
3. Leon Johnson 3,693 '93-'96

CAREER RECEIVING LEADERS
1. Hakeem Nicks 2,840 '06-'08
2. Corey Holliday 2,447 '89-'93
3. Octavus Barnes 2,398 '94-'97

The Tar Heels are 3-0 vs The Citadel but these teams have not met since 1986. The Bulldogs went 4-8 LY in the Southern Conf including a 70-19 loss to Florida. NC is 9-15 vs non-conference foes S/O3 but did go 4-1 LY. The Tar Heels are 2-7 L/9 gms vs current BE opponents but went 2-1 LY defeating Rutgers & Connecticut. The Tar Heels are 8-2-1 in this instate matchup but did lose in 2007 (34-31). In that game, EC kicked a 39 yd FG on the final play in Davis' first loss at NC. The Tar Heels are 4-12 the last 4 years on the ACC road. NC is 2-9 vs the Yellow Jackets but last year #19 NC defeated #22 GT 28-7 allowing only a 4Q TD. Billed as the South's Oldest rivalry & this is the 114th meeting. North Carolina is 2-9 vs Virginia S/'98. Last year the Cavs went 82/9pl to score with :47 left & force OT. First meeting. Georgia Southern was 6-5 LY including a 45-21 loss to Georgia. The Eagles are 0-7 vs current ACC teams & 33-41 vs current FBS schools. First ever Thur night HG for the Tar Heels. This is the 1st visit by FSU to Kenan Memorial Stadium since '03. The Tar Heels are only 1-14-1 all-time vs the Seminoles. NC has not defeated the Hokies since they joined the ACC in '04 (0-5). LY VT's Keys kicked the go-ahead 45 yd FG to cap VT's comeback from a 2 TD deficit & beat NC 20-17. This is the 96th meeting in this instate rival & NC holds a 56-35-4 record. NC is 18-1 vs Duke since '90 but the L/4 have been decided by an avg of 5 ppg. Randy Shannon was a player & assistant coach under HC Davis at Miami. The home team is 4-1 in this ACC matchup with NC getting the lone road win LY. BC is now 0-7 against Davis coached teams. Last year WR Nicks had three 2Q TD rec's & ran for a TD in the 4Q to help Tar Heels beat #23 BC, 45-24. NC has now lost back-to-back games in the series including LY's as #25 NC (7-4) was beaten soundly, committing 6 TO's as NCSU defeated the Tar Heels 41-10.

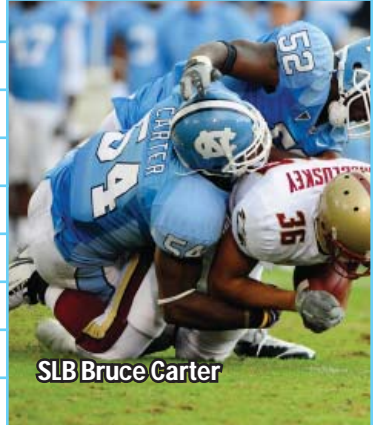
Davis at N CAROLINA/OVERALL
12-13 / 63-33 SU 0-1 / 4-7 Vs Top 10
9-4 / 36-13 Home 3-3 / 12-15 Vs Top 25
3-8 / 23-19 Away 3-3 / 11-12 Vs BCS Tms
0-1 / 4-1 Neutral 2-2 / 13-7 Off A Bye
7-9 / 40-18 Vs Conf 6-6 / 18-13 Off A Loss

2008 RECORD:
(8-5)

RETURNING STARTERS:
OFFENSE: 6*
DEFENSE: 9

LETTERMEN:
Returning: 40 (16,22,2)
Lost: 14 (9,4,1)

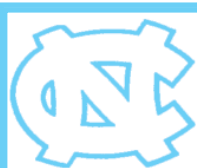
2008 AVERAGE ATTENDANCE: 57,829 (#34)
ACC - COASTAL DIVISION



SLB Bruce Carter

STADIUM: KENAN MEMORIAL STADIUM (60,000)(#42) PLAYING SURFACE: GRASS

	2000	2001	2002	2003	2004	2005	2006	2007	2008	9Yr Total
Straight Up	6-5	8-5	3-9	2-10	6-6	5-6	3-9	4-8	8-5	45-63
Home	3-3	5-1	0-6	1-5	4-2	4-2	2-5	4-2	5-2	28-28
Away	3-2	2-4	3-3	1-5	2-3	1-4	1-4	0-6	3-2	16-33
Neutral	0-0	1-0	0-0	0-0	0-1	0-0	0-0	0-0	0-1	1-2
vs Conf	3-5	5-3	1-7	1-7	5-3	4-4	2-6	3-5	4-4	28-44
vs Non-Conf	3-0	3-2	2-2	1-3	1-3	1-2	1-3	1-3	4-1	17-19
ATS	6-5	6-7	4-8	6-6	7-4	6-5	4-7	6-5	7-5	52-52
Home Fav	2-3	1-4	0-1	0-1	0-0	1-2	0-1	1-2	3-3	8-17
Home Dog	1-0	1-0	0-5	2-3	4-1	1-1	3-2	2-0	0-0	14-12
Away Favorite	2-0	0-1	0-0	1-0	1-0	0-0	0-1	0-0	1-2	5-4
Away Dog	1-2	3-2	4-2	3-2	2-2	3-2	1-3	3-3	2-0	22-18
Neutral	0-0	1-0	0-0	0-0	0-1	0-0	0-0	0-0	1-0	2-1
vs Conf	3-5	4-4	2-6	3-5	7-1	5-3	3-5	4-4	4-4	35-37
vs Non-Conf	3-0	2-3	2-2	3-1	0-3	1-2	1-2	2-1	3-1	17-15
Off SU Win	2-3	3-4	0-2	1-1	2-4	2-3	0-2	2-1	4-4	16-24
Off SU Loss	3-2	2-3	4-5	5-4	5-0	3-2	4-4	4-4	3-1	33-25



YR	BOWL/TM RANK	LINE	OPPONENT	SCORE	LAST 5 BOWL GAMES
97	Gator - #7	-11'	Virginia Tech	42-3	
98	Las Vegas	-7	San Diego St	20-13	
01	Peach	-2	Auburn	16-10	
04	Continental Tire	-1	Boston College - #25	24-37	N Carolina's All-Time Bowl Record 12-14
08	Meineke Car Care	+2	West Virginia	30-31	

2008 STATISTICAL LEADERS

RUSHING	ATT	GAIN	LOST	NET	TD	AVG	PLAYER	TKL	SKS	TFL	PBU	INT										
Shaun Draughn	198	898	32	866	3	4.4	Quan Sturdivant	122	2	3.5	4	2										
Greg Little	78	364	25	339	3	4.3	Mark Paschal	103	2	4.5	2	2										
Ryan Houston	77	303	4	299	8	3.9	Kendrick Burney	78	0	7.5	5	3										
Brandon Tate	11	151	8	143	1	13.0	Bruce Carter	68	5	6	2	1										
Brooks Foster	8	104	0	104	0	13.0	Deunta Williams	65	0	1	3	3										
TJ Yates	24	28	95	-67	1	-2.8	Trimane Goddard	54	0	1.5	7	0										
Cameron Sexton	26	20	116	-96	1	-3.7	Jordan Hemby	49	0	3	3	0										
ATT COMP PCT YDS TD INT	ATT COMP PCT YDS TD INT	ATT COMP PCT YDS TD INT	ATT COMP PCT YDS TD INT	ATT COMP PCT YDS TD INT	ATT COMP PCT YDS TD INT	ATT COMP PCT YDS TD INT	ATT COMP PCT YDS TD INT	ATT COMP PCT YDS TD INT	ATT COMP PCT YDS TD INT	ATT COMP PCT YDS TD INT	ATT COMP PCT YDS TD INT	ATT COMP PCT YDS TD INT										
Cameron Sexton	168	94	56.0	1261	9	6	Marvin Austin	38	1	0.5	1	1										
TJ Yates	135	81	60.0	1168	11	4	Robert Quinn	34	2	4.5	1	0										
Mike Paulus	13	4	30.8	33	0	2	Cam Thomas	34	1	2.5	0	0										
RECEIVING	REC	YDS	AVG	TD	LONG	RECEIVING	REC	YDS	AVG	TD	LONG	RECEIVING	REC	YDS	AVG	TD	LONG					
Hakeem Nicks	68	1222	18.0	12	74	Charles Brown	26	0	2	1	0	Da'Norris Searcy	25	2	0	3	0					
Brandon Tate	16	376	23.5	3	69	Chase Rice	20	0	0	0	0	Ryan Taylor	19	0	0	0	0					
Brooks Foster	30	334	11.1	2	44	Ryan Taylor	19	0	0	0	0	Tyandre Powell	18	1	3.5	0	0					
Greg Little	11	146	13.3	0	32	Aleric Mullins	12	1	1	0	0	Matt Merletti	11	0	0	0	0					
Richard Quinn	8	97	12.1	1	32	Johnny White	11	0	0	0	0	Johnny White	11	0	0	0	0					
Cooter Arnold	7	87	12.4	1	59	Michael McAdoo	9	2.5	0.5	0	0	Michael McAdoo	9	2.5	0.5	0	0					
Anthony Elzy	7	86	12.3	0	19	NO YDS	NO YDS	AVG	TD	NO YDS	AVG	TD	NO YDS	AVG	TD	NO YDS	AVG	TD				
Shaun Draughn	16	81	5.1	1	14	NO YDS	NO YDS	AVG	TD	NO YDS	AVG	TD	NO YDS	AVG	TD	NO YDS	AVG	TD				
Terrence Brown	59	2331	39.5	7	34.0	0	26	KICK RETURNS	NO YDS	AVG	TD	NO YDS	AVG	TD	NO YDS	AVG	TD	NO YDS	AVG	TD		
KICKING	XP	1-29	30-39	40-49	50+	TOTAL	LONG	KICK RETURNS	NO YDS	AVG	TD	NO YDS	AVG	TD	NO YDS	AVG	TD	NO YDS	AVG	TD		
Casey Barth	33-33	2-3	5-7	3-4	0-1	10-15	42	JOHNNY WHITE	15	379	25.3	0	JOHNNY WHITE	15	379	25.3	0	JOHNNY WHITE	15	379	25.3	0
Jay Wooten	11-11	3-3	0-1	1-1	0-1	4-6	43	BRANDON TATE	11	305	27.7	0	BRANDON TATE	11	305	27.7	0	BRANDON TATE	11	305	27.7	0

OFFENSE - LAST 7 YEARS - DEFENSE

RET	OFF	TOTAL	OFF	OFF	PASS	%	SKS	TOTAL	RET	DEF	TOTAL	DEF	DEF	DEF	PASS	%	DEF	SKS	
STS	PTS	OFF	RUSH	YPC	PASS	YPP	VS	TURN	STS	PTS	DEF	TOTAL	DEF	DEF	PASS	YPP	BY		
10*	27.7	321	123	3.5	199	56.9	11.6	28	+6	2008	8	21.2	365	139	3.7	226	61.6	17.3	22
5*	21.2	325	99	3.0	226	59.8	15.4	37	-6	2007	4	24.5	350	143	3.5	207	62.4	14.3	34
6	18.0	293	113	3.6	180	50.8	16.3	22	-11	2006	6	30.5	368	173	4.5	196	62.1	12.1	23
5	18.0	316	101	2.8	214	51.4	17.5	33	-1	2005	9	26.2	349	138	3.5	211	57.6	13.3	31
8*	26.6	391	176	4.9	214	59.6	14.7	21	-4	2004	6	31.8	447	218	5.2	228	61.5	14.0	20
8*	26.4	394	150	4.7	244	60.1	14.9	23	-15	2003	7	38.3	505	227	4.9	278	63.0	13.2	16
6	18.6	369	103	3.0	267	54.6	19.9	46	-15	2002	3	35.1	452	221	4.8	231	54.9	12.9	20

2008 STATS BY GAME

NC 2008 ATT	OPPONENT	FD	Rush-YDS	AVG	CO-ATT	YDS	SKS	VS	FD	Rush-YDS	AVG	CO-ATT	YDS	SKS	TURN
58,000	McNeese St	13	29-163	5.6	15-26	221	2	22	46-152	3.3	18-32	239	0	0	
42,502	at Rutgers	18	38-157	4.1	14-23	221	1	23	29-140	4.8	25-43	243	1	+4	
59,800	Virginia Tech	14	32-103	3.2	14-26	204	4	16	42-127	3.0	12-22	141	2	-2	
35,830	at Miami, FL	16	33-35	1.1	13-24	264	2	18	33-135	4.1	22-33	174	2	+2	
59,500	Connecticut	13	33-146	4.4	9-16	117	2	23	40-168	4.2	24-44	210	1	+2	
60,500	Notre Dame	21	32-121	3.8	18-32	201	1	27	30-89	3.0	31-48	383	4	+5	
52,342	at Virginia	19	48-166	3.5	16-26	166	1	15	27-58	2.1	24-38	217	1	-3	
48,000	Boston College	19	36-114	3.2	19-30	238	3	17	21-40	1.9	28-42	204	1	+2	
59,000	Georgia Tech	13	42-186	4.4	8-19	128	2	20	54-326	6.0	10-23	97	2	+3	
46,113	at Maryland	11	26-75	2.9	11-25	210	3	27	53-195	3.7	16-32	141	1	-1	
60,000	NC State	13	26-56	2.2	14-28	147	3	18	45-187	4.2	17-28	279	2	-6	
30,322	at Duke	20	47-179	3.8	15-19	190	3	19	22-72	3.3	34-49	278	1	0	
73,712	† West Virginia	15	29-93	3.2	16-26	277	1	20	42-123	2.9	26-32	332	4	0	
TOTALS		205	451-1594	3.5	182-320	2584	28	265							