

TROY TROJANS

POSITION OUTLOOK FOR 2009

QUARTERBACKS - Troy had inconsistent QB play in '05 but in '06 brought in new OC Tony Franklin and JUCO QB Omar Haugabook. I projected Haugabook as the starter and he threw for 2,401 (61.3%) with a 21-17 ratio and was named SBC POY. Naturally, Haugabook had an even better '07 throwing for 2,975 (61.3%) with an 18-15 ratio (#2 rusher, 631 net). Last year it was a 4 man battle with 3 soph's who had played in a combined 19 games here and a transfer from Richmond, Levi Brown. Soph Jamie Hampton (PS#111) was the most mobile and fit into new OC Neal Brown's style. The other two were Tanner Jones (6'0" 195 Jr, PS#99) and Jonathan Chandler (PS#92). True frosh Corey Robinson ran the same offense in HS and was Mr. Football in Kentucky setting a national HS record with 91 TD's throwing for 5,872 (73.7%) with just 4 int as a senior but ended up grayshirting. Hampton threw for 1,046 (61.5%) with a 9-8 ratio in 5 but was in w/ FAU. Jones and Brown fought for the starting spot with Brown winning and throwing for 2,030 (61.7%) with a 15-3 ratio, earning SBC Newcomer of the Year. Brown set a school record vs NT with 40 comp while his 391 yds where the most yds under Blakeney (Brock Nutter, 390 in '99). He didn't have an int in his first 104 att. Jones DNP vs FIU then tore his ACL vs NT. Blakeney took the RS off of true frosh Dantavious Parker (5'11" 214, PS#258) who played in 4 hitting 1 of 3. Chandler played in 6 (2 att) while WR Jerrel Jernigan also saw a few snaps. This year everyone returns (Chandler moves to WR) and the unit is vastly more experienced.

RUNNING BACKS - In '07, Kenny Cattouse was the leading returning rusher and led with 791 (5.9). Unheralded true frosh DuJuan Harris (PS#506) rushed for 372 (4.5). Last year they had to replace Cattouse. Troy got the big-time addition of Colorado and JC trans Maurice Greer (PS#28). Unfortunately, Greer was diagnosed with cancer and saw his weight drop and rushed for just 194 (6.3). Xavier Moreland was #1 at the start of Aug but broke his collarbone and played in just 9 (226, 6.6). Harris became just the 5th 1,000 yard rusher in school history (1,077, 5.1) and had 234 vs UL, just missing the school record set by Eddie Brundidge (244 in 1984). The only loss this year is Moreland and not listed in the PSL are DJ Taylor (6'0" 228 So), TJ Mitchell (5'7" 174 rFr), Bryant Williams (5'8" 179 rFr), Andrew Martin (6'0" 265 Jr), Chris Blanton (5'11" 190 Jr) and Dexter Gilley (5'10" 187 rFr).



RB DuJuan Harris

RECEIVERS - Last year Troy lost its #1 and #2 rec. Jerrel Jernigan (PS#155QB) who as a true frosh, was #3 with 337 (11.2) was by far the team's top WR. Despite missing 1.5 gm LY he led with 868 (11.3) and finished as the single season record holder with 77 rec (Danny Grant, 72 in 1968). Kennard Burton (4 st, 219, 12.2 in '07) was #2 with 492 (10.5). Mykeal Terry was the #2 rec

in '06 with 477 but dropped to 186 (8.9) in '07 and added just 210 (9.1) in '08. This year they must replace Burton (13 st), Terry (13 st), Gerald Tate (2 st, 238, 10.3) and Fred Turner (9 rec). Not listed below are Willie McDowell (6'1" 198 So), Darius Chambers (5'11" 178 rFr) and former QB Chandler (6'0 206 Jr), TE's Matt Stidham (6'3" 233 So) and Luke Rowe (6'3" 246 rFr). With Jernigan back and now a junior along with the addition of Okla transfer Josh Jarboe (PS#23), this is a stronger, more experienced group.

DEFENSIVE LINE - In '07 Troy had to replace 4 starters including 1st & 2nd Tm SBC OL's. In the 2nd year of the spread offense, the numbers actually improved to 183 ypg rush (4.7), an IA best (for Troy) with just 18 sacks (3.5%). That inexperienced '07 group had the benefit of adding 2 JUCO's (in spring) and both started all year. Troy also benefited from great health as 4 OL's started all 12. Last year the entire 2 deep returned. After 2007's abnormal increase, a more veteran Troy OL actually had its rushing number decrease to 168 ypg (4.9) but allowed just 13 sacks (tie #4 FBS, 2.5%). This year they lose 1st Tm SBC LT Chris Jamison (13 st, 3Y str), RT Dion Small (13 st, 2Y str), RG Wesley Potter (4 st, 12 st '07) and backups RG Steven Merkel (10 gm), Will Chambliss III (11 gm '08, 7 st '07). Three full-time starters do return. OL coach John Schlarman has done a solid job and despite being a little less experienced, should produce another fine unit as they add 4 JUCO's (3 in for spring).

DEFENSIVE LINE - Troy's D-line produced a #2 NFL DC in Osi Umenyiora after the '02 season and a #1 DC in DeMarcus Ware after '04. After yielding just 2.7 ypc rush in '04, Troy had to replace all 4 starters in '05 and allowed 3.7 ypc rush while the D had just 17 sacks. In '06 they had to replace 3 starters. DE Kenny Mainor was called "the next Ware" and he had 6.5 sacks. Troy yielded 3.7 ypc again but with 36 sacks. In '07 they had 3 starters returning but surprisingly allowed 4.9 ypc rush, their worst in FBS play by over a yard. Last year they lost DE Mainor after 3 starts so basically had 1.5 starters back. Brandon Lang had 17.5 flt breaking Ware's school record and he and Cameron Sheffield (11 st '07), who had 5.5 sacks, both earned 1st Tm SBC. This year both made the Preseason Lombardi Watch List. Troy improved to 140 ypg (3.5) and increased their sack total to 37. This year they lose HM SBC DT Steve McLendon (13 st, 40 tkl, 3 sk), 1st Tm SBC DT Dion Gales (11 st, 62 tkl, 5.5 sk, 10 flt), Mainor and DT Maurice Coleman (2 st, 46 tkl, 4.5 sk). They add PS#47JC Kevin Dixon (4 st Neb in '07) and 3 other JC's including Eugene Kinlaw (PS#31), Not listed below are Marlon Quinn (6'3" 295 Jr), Brandon Boudreaux (6'1" 225 So) and Zack Harris (6'5" 300 Jr). Despite the losses, this group could be even stronger.

LINEBACKERS - Last year Troy had to replace one starter (#5 tkl'r) and 1 backup (3 st) but returned its #1 and #2 tacklers. They had 3 solid starters but depth was lacking. The unit was led by the "Killer Bees" of Bear Woods and Boris Lee. Lee was 1st Tm SBC and Woods 2nd Tm. This year those 2 return as does PS#127JC David McDowell (3 st '07, miss '08). Not listed in the PSL are Tony Bennett (5'10" 204 Jr) and Chase Boutwell (6'0" 212 rFr). They lose 1st Tm SBC SLB Terence Moore (13 st, 76 tkl, 6 int) and Trinity Thomas (14 tkl). With the top 2 back, this is the SBC's best LB corps but depth is still a concern.

DEFENSIVE BACKS - In '06, Troy had just 1 starter back and finished #83 in my pass D rankings. In '07 they had to replace a 1st Tm SBC SS but had 7 of the top 8 return and added Fla St transfer Trevor Ford (PS#35). Troy clearly had the best CB tandem in the SBC with 1st Tm SBC's Leodis McKelvin and Elbert Mack, who tied for the int lead in the NCAA with 8! Troy moved up to #49. Last year both CB's departed (McKelvin #1DC) but Ford started all 13 and they added JC CB Jorrick Calvin (2nd Tm SBC). Troy moved up to #10 allowing an 18-21 ratio. This year they lose 1st Tm SBC FS Sherrod Martin (13 st, 94 tkl, 4 int, #2DC CAR), 2nd Tm SBC SS Tavares Williams (13 st, 75 tkl, 3 int) and CB Ford (13 st, 49 tkl, 6 pbu). They are less experienced and figure to take a good-size drop in my pass D rankings.

SPECIAL TEAMS - HC Blakeney always puts an emphasis on ST and they have fared well (#45 finish in my ST rankings '04). Last year they had to replace KR/PR Leodis McKelvin who tied an NCAA rec with 8 career TD's (not incl 5 negated by pen). They also had to replace K/P Greg Whibbs. JUCO Jorrick Calvin avg 25.7 on KR and 9.9 on PR. RFr P Will Goggans avg 39.2 (36.5 net). K Sam Glusman was having a fine year (set schl rec w/17 kick pts vs Alcorn St) hitting 12 straight FG to start but missed 3 xp's and a 48 yd FG vs NT connecting on just 8 of his final 17. One miss was a 56 yarder that bounced off the crossbar (would have won gm vs ULM). Troy blocked a FG for a TD which I added into their TD/Blk category. Overall, Troy rose to #17 (#63 in '07) and have the SBC's top ST unit.

COACHES - In Larry Blakeney's 18 years here he has guided Troy from Div II to IAA and finally to IA ('01). Troy won 3 Southland Conf Titles in the final 5 years of IAA and in '99 beat Cincy, USF and MT finishing #6 in IAA. Last year Neal Brown became the youngest OC in the FBS at 27. He played in the system at Kentucky and was the QB coach here 3 years prior. DC Jeremy Rowell played QB at Troy from '91-'95. Rowell was the co-DC in '06 and took over the duties by himself in '07. Blakeney is 4th among active coaches in NCAA wins at their current school (144).

PHIL'S FORECAST

Troy went from Div II to IAA to IA in 13 years. The Trojans suffered their first losing season in 5 years in '02 as they upgraded their schedule to take on more IA teams. They expanded their stadium to 30,000 and switched to an AstroPlay surface in '03. Despite 8 road games, posting the highest travel mileage total in school history (7,270) and having just 9 starters returning, they managed a 6-6 record. In '04, they had 17 starters returning led by an outstanding DL. I called them the 9th Most Improved team in the country. Troy upset Marshall on the road, then beat #19 Missouri at home on ESPN which led to their first FBS bowl berth. Despite a 7-5 overall record, they were actually -26.8 ypg in '04 benefiting from +11 in TO's. In '05 they were the least experienced team in the SBC (7 ret str). Troy was picked 2nd in the preseason SBC poll but I did not make a lot of friends in Troy when I pegged them 6th. As I expected, Troy struggled and finished 4-7 and was -9 in TO's. In '06, they had 10 ret starters (2nd fewest SBC) but benefited from 4 close wins in SBC play including a miracle vs MT in which they trailed 20-7 with 3:33 left but won on a TD with :14 left. Troy thumped Rice 41-17 in the bowl. In '07, they had 13 returning starters and I called for them to have their best off ppg in the L7Y and they did, avg 34.0 ppg (best S/95). Troy had a brutal non-conf schedule including traveling to 3 ranked SEC teams but for the 2nd time ever they hosted a BCS school and for the 2nd time, upset a B12 member, Okla St (led 41-10). As expected, Troy rolled through the SBC and earned its first ever votes in the AP poll, though never officially ranked. They only had to beat FAU at home to wrap up the SBC but were upset and failed to even make a bowl. Troy was +155.7 ypg, almost 100 yards better than FAU, but only claimed a share of the SBC Title. Last year Troy had 14 starters back and had another brutal non-conf schedule. They also had to replace a 1st Rd DC plus their starting QB. Troy beat MT in the opener and had the LSU game postponed. Troy put up a record 736 yards in their romp over Alcorn St. After 3Q's vs Ohio St, they had FD & yd edges but lost 28-10. Okla St wanted revenge after losing the previous year and led 35-10 at half and piled up 612 yds. QB Hampton was lost vs FAU. In Brown's first start he guided them to a 33-23 win over FIU. They blasted NT but ULM got a TD pass w/34 left to win. After getting past WKU 17-7, Troy led defending National Champ LSU 31-3 early 3Q!! Half of the home crowd left but LSU got its biggest comeback in program history. Troy rallied to beat UL and Ark St to win the SBC but blew a late lead vs SM in the bowl and lost in OT. Troy has just 12 ret starters but could have had a much better record as they had 3 net close losses, were +77.6 ypg (best SBC), and are the most talented team in the SBC. Troy gets a 2nd straight conf title.

TOP NEWCOMERS FOR 2009

- DL Eugene Kinlaw 6-2 294 PS#31JC
- DL Antonio Harper 6-4 230 PS#59
- DL Jonathan Massaquoi 6-4 230 PS#150JC
- DL Riley Flowers 6-0 273 PS#166JC
- DL Emmanuel Dudley 6-0 283 PS#182JC
- DL Vinson Bass 6-2 285 PS#155
- OL Ray Carter 6-3 280 PS#222JC
- QB Corey Robinson 6-0 212 PS#113 08
- DB Bradley Wallace 6-2 195 PS#179
- DL Dontavious Pylon 6-2 270 PS#176
- WR Jason Bruce 5-8 148 PS#237JC
- WR Anthony Williams 6-2 202 PS#153
- OL Jeremy Simmons 6-4 343 PS#203
- OL Tyler Graves 6-5 284 PS#307JC
- DL DeMarcus Robertson 5-11 166 PS#307JC 08
- LY Jay Stansberry 6-4 265 PS#245
- GR Greg Pratt 5-8 165 PS#199
- RB Shawn Southard 5-9 185 PS#216
- OL James Brown 6-4 346 PS#401JC
- WR Sam Haskins 6-4 200 PS#267
- DB Barry Valcin 6-0 190 PS#801JC
- DB Caleb Massey 6-0 185 PS#564
- OL Jimmie Arnold 6-0 283 PS#307 08
- LB Johnny Thompson 5-11 209 PS#250 08
- WR Felton Payton 6-0 178 PS#320 08
- OL Cody Jenkins 6-5 290 PS#666
- OL John Clark 6-4 220 PS#667
- DL Aaron Williams 6-5 260 PS#668
- DL Daymond Brinson 6-3 230 PS#669
- WR Dominique Bonham 6-2 174 PS#629
- DL Sherman Teart 6-2 250 PS#701
- OL Nathan Newland 6-2 293 PS#912
- WR Gavin Ellis 6-6 219 PS#967
- WR Jamel Johnson 6-0 180 PS#968
- DL Anthony Payne 6-2 285 PS#972
- DB Mike Robinson 6-2 205 PS#1208
- DB Troy Gray 5-11 180 PS#1212
- DB Willard Ross 6-1 185 PS#1805JC
- RB Dezman Ivory 5-11 175 PS#1607
- DL Sergio Perez 6-0 170 PS#1875

OFFENSE

JERSEY #
IN MAROON

2009 PROJECTED STARTING LINEUP

JERSEY #
IN MAROON

DEFENSE

- QB 12 LEVI BROWN SR. 6-4 219 PS#238. Richmond trans. 8 st, 2030 (62%) 15-3 ratio LY. 7 Jamie Hampton (6'2" 211 Jr) PS#111, 6 st, 1091 (61%) 10-9 ratio, 426 rush 2Y.
- FB 32 DUJUAN HARRIS JR. 5-7 183 372 (4.5) tue. 11 st, 1077 (5.1), 36 rec, 1st Tm SBC LY. 27 Maurice Greer (5'11" 213 Sr) PS#28, 194 (6.3) LY. Fernandus Edwards (5'7" 202 Sr) 3 rec LY.
- WR 3 JERREL JERNIGAN JR. 5-9 173 PS#155, 337 (11.2) tue. 9 st, 868 (11.3), 1st Tm SBC LY. 83 Zack Marcum (5'9" 170 Sr), 2 st, 166 (7.2) 3Y HB Nathan Nolin (6'0" 207 Sr), Josh Milner (5'11" 214 So).
- WR 5 JOSH JARBOE rFr. 6-2 189 PS#23, Okla trans. Justin Bray (5'11" 205 Sr), 172 (6.6) 3Y. Tebarius Gill (6'1" 198 Jr) PS#216. Garry Williams (6'1" 183 rFr), Daniel Stanley (6'0" 181 rFr).
- WR 1 CORNELIUS WILLIAMS SR. 6-0 189 PS#99, 249 (10.0) 2Y, 10 st, 174 (9.7) LY. 21 Austin Silvey (6'2" 184 Jr) PS#385, 2 st, 266 (12.1) 2Y. Chip Reeves (5'10" 169 So) PS#169, 4 rec true.
- WR 4 ANDREW DAVIS SR. 5-9 177 2 st, 577 (10.7) 3Y. Jason Bruce. In spg. 86 Patrick Cherry (5'11" 205 Sr) PS#205, 122 (11.1) 3Y. TE 45 Travis Boyd (6'3" 245 Sr), 4 st, 7 rec (7.9) 3Y.
- C 75 DANNY FRANKS SR. 6-3 310 PS#560, 1 st @RG rFr, 22 st @C 2Y. 2nd Tm SBC LY. 67 Jimmie Arnold PS#307, 60 Zach Swindall (6'0" 260 So), 1 gm. LS Drew Robinson (5'11" 232 So).
- RG 73 STEVEN ADAMS SR. 6-3 315 PS#524, 7 gm '07, 10 st @RG, 3 @C LY. 55 Micah Grimes (6'4" 305 So) PS#115, 4 gm. Murray Keasler (6'0" 291 So) PS#363, Lance Gunn (6'2" 300 rFr).
- LG 58 TYLER CLARK JR. 6-2 275 5 st true. 13 st, 2nd Tm SBC LY. Tyrell Curtis (6'3" 307 Sr) PS#422JC, 2 gm LY. Jacob Creech (6'3" 283 rFr) PS#298. LeDeerly Benson (6'1" 343 rFr).
- RT 69 TYLER GRAVES JR. 6-5 284 PS#307JC. Orig with Florida St. In for spring.
- LT Ray Carter (6'3" 290 Jr) PS#222JC. In for spg. 77 Kyle Wilborn (6'5" 290 rFr) PS#481.
- 65 Nic Riley Sr. 6-4 304 PS#177, 13 st, 3 gm '07, 10 st as backup LY.
- 70 James Brown PS#401JC. In spg. Jeremy Simmons PS#203. Leo Dicesaris (6'7" 316 So).
- K 38 SAM GLUSMAN SR. 5-10 166 1 gm 2Y. 20-29 FG, 7-11 40+, L/48, 48-52 xp, 2nd Tm SBC LY. 35 Michael Taylor. 36 Anthony Cetrangelo (5'8" 165 rFr). 37 Thomas Starr (6'0" 194 rFr).

- DE 91 BRANDON LANG SR. 6-4 256 PS#84, 30 tkl, 8 flt 2Y, 10 st, 69 tkl, 17.5 flt, 1st Tm SBC LY. 99 Mario Addison, Jonathan Massaquoi. 54 Jeremy Hawkins (6'3" 224 Sr) PS#388, 7 tkl 2Y.
- DT 59 KEVIN DIXON SR. 6-2 271 PS#47JC, 4 st, 19 tkl at Neb '07. Trans LY. Eugene Kinlaw PS#31JC. Chigozie Nwankwo (6'2" 276 rFr) PS#305, James Searcy (6'3" 282 rFr) PS#222.
- DT 92 EMMANUEL DUDLEY JR. 6-0 283 PS#182JC. Rashad Roussell (6'2" 265 Sr), 33 tkl, 4.5 flt LY. Riley Flowers PS#166JC. Tim Lamb (5'11" 335 rFr), Tony Davis (6'2" 229 rFr) PS#473.
- DE 90 CAMERON SHEFFIELD JR. 6-2 249 PS#458, 4 tkl true. 11 st, 27 tkl '07, 13 st, 66 tkl, 12.5 flt, 1st Tm SBC LY. 55 RJ Roberts (6'3" 241 So) PS#156, John Mark Patrick (6'3" 244 Jr) PS#439.
- SLB 50 DAVID McDOWELL SR. 6-1 247 PS#127JC, 3 st, 15 tkl LY. 40 Johnny Thompson PS#250, Carvel Jones (5'11" 225 Sr) PS#485, Miss ST trans. 4 tkl here 2Y. Erik Groat (6'0" 205 So).
- MLB 2 BORIS LEE SR. 6-0 245 PS#495, 21 st, 144 tkl 2Y, 13 st, 126 tkl, 9.5 flt, 6 pd, 1st Tm SBC LY. 49 Xavier Lamb (5'9" 222 So) PS#303, 27 tkl rFr. Jacoby Thomas (6'0" 227 rFr) PS#117.
- WLB 48 BEAR WOODS SR. 6-0 232 26 tkl 3Y, 10 st, 108 tkl, 2nd Tm SBC LY. 33 Donnell Golden (6'0" 237 So) PS#437, 3 st, 31 tkl rFr. Rod Winston (6'3" 222 rFr), Brannon Bryan (6'0" 227 rFr).
- CB 15 DeMarcus Robertson Jr. 5-11 166 PS#327JC. DNQ LY. 34 KeJuan Phillips (5'10" 178 So), 3 tkl true. Kedric Manning (5'10" 194 Sr) PS#414JC, 13 tkl LY. Brandon Lucas (5'7" 165 rFr).
- CB 14 JORRICK CALVIN SR. 5-11 184 PS#166JC, 12 st, 76 tkl, 4 flt, 11 pd, 2nd Tm SBC LY. Bryan Williams (6'0" 175 rFr) PS#317, Sam Sellers (5'9" 188 Jr), 8 tkl 2Y. Dre Harris (5'10" 180 rFr).
- SS 18 COURTLAND FULLER SR. 5-11 199 PS#130, 17 tkl 2Y, 20 tkl LY. 23 Bryant McKissic (6'2" 210 Jr) PS#481, 18 tkl 2Y. 25 Breylan Boyd (5'11" 212 Jr), DJ McLeary (5'10" 194 rFr).
- FS 13 CHRIS BOWENS SR. 6-0 187 10 tkl 2Y, 1 st, 14 tkl LY. 39 Daniel Sheffield (6'4" 189 Jr) PS#271JC, 22 tkl LY. Barry Valcin is PS#801JC. Caleb Massey is PS#564.
- P 47 WILL GOGGANS SR. 6-0 223 PS#53, 52 punts (39.2), net 36.5, 2nd Tm SBC LY. 35 Michael Taylor (5'10" 209 So), 89 KQ, 9 TB rFr. Rugby-style P. Josh Milner (5'11" 214 So).

TROY TROJANS

Troy, Alabama
Weather (800) 628-9252

LARRY BLAKENEY (Career 52-44) (FCS 92-29-1)
Blakeney's Bowl
19th Year at Troy
Record: 1-2

Phil's Homefield Edge-4 2009 Schedule Difficulty #109

Date	Opponent	TURF	LINE	Final Score	W
				TU Opp	L
Sep. 3	at Bowling Green (Thur)	A			
Sep. 12	at Florida	G			
Sep. 19	UAB	A			
Sep. 26	at Arkansas St	A			
Oct. 6	Middle Tenn (Tues)	A			
Oct. 10					
Oct. 17	at FIU	A			
Oct. 24	North Texas	A			
Oct. 31	ULM	A			
Nov. 7	at WKU	A			
Nov. 14	at Arkansas	A			
Nov. 21	Florida Atlantic	A			
Nov. 28	at Louisiana	A			
Dec. 5					

CAREER PASSING LEADERS
1. Brock Nutter 7,791 '98-'01 1. DeWhitt Betterson 3,441 '01-'04 1. Danny Grant 2,907 '66-'69
2. Sim Byrd 7,619 '66-'68 2. Ted Horstead 2,926 '83-'86 2. Vince Green 2,281 '67-'70
3. Omar Haugabook 5,376 '06-'07 3. Mike Turk 2,533 '84-'87 3. Jason Samples 2,224 '01-'04

CAREER RUSHING LEADERS
1st meeting. Troy has met just one MAC team, losing to N Illinois 34-21 in the 2004 Silicon Valley Bowl (1st in school history). The Trojans are 2-6 in road openers.

CAREER RECEIVING LEADERS
Troy is 1-9 vs tms from the SEC. LY Troy led #19 LSU 31-10 in the 4Q but gave up 30 pts in the final period for the 40-31 loss. These 2 first met in '07, a 59-31 Florida win. These 2 schools have split their 6 meetings but Troy has dropped the L/2 (27-7, '05; 21-3, '06). The Trojans are 18-0 in home openers under HC Blakeney.

Troy is just 3-6 all-time vs the Red Wolves but have won the last 2 by an avg of 27 ppg. The Trojans are 9-1 in conference road games the last 3 years.

Troy is just 5-11 vs the Blue Raiders but have won 4 of L/5 (including 3 straight). Playing for the Palladium Trophy, this gm is billed as the "World's Largest Toga Party".
Bonus: Troy is 1-15 vs ranked teams defeating #19 Missouri in 2004 (24-14).

Last year vs FIU QB Brown made his first start & WR Jernigan had 220 total yds. The Trojans are 5-0 vs the Golden Panthers winning 4 of the 5 by double digits.

LY the Trojans piled up 547 yds (439 pass ssn high) in their 45-17 win. Trojans are 5-1 vs the Mean Green (L2Y have combined to outscore 90-24 & outgain 1,040-543 NT).

Troy is 7-3-1 vs the Warhawks but lost LY as a last play 56 yd FG hit the crossbar. The home team is 5-0 in this series since 2003 (3 gms decided by 5 pts or less).

Troy is 6-0-1 vs the Hilltoppers all-time as WKU is a full SBC member this year. Trojans are 15-7 in their last 22 November/December regular season games.

Troy is 0-2 vs Arkansas, losing 23-0 in 2002 & 46-26 in 2007.
In their 1st meeting they combined for just 19 FD's & 267 yds (42 & 883 in 2nd gm).

The Trojans are 5-1 vs the Owls but the home team is 0-3 the last 3 years. Last time here Troy trailed 35-12 in the 4Q & got to the FAU 30 on the last drive.

The Trojans have won 5 of the last 6 meetings in this series, but trail all-time 5-7. LY Troy rushed for 391 yds, most ever since joining the FBS in '02 (Harris career high 234 yds).

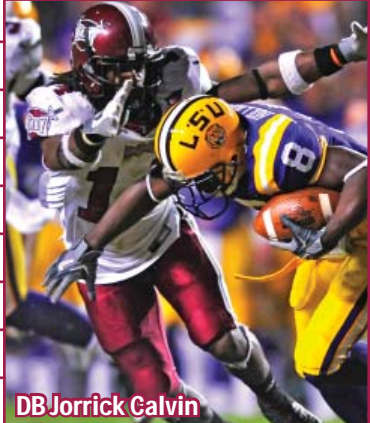
Bonus: Troy is 13-5 in regular season home finales under Blakeney & snapped a 3 game losing streak last year beating Arkansas St 35-9.

Blakeney's records AT TROY (FBS)

52-44 Straight Up 0-7 Vs Top 10
33-5 Home 1-15 Vs Top 25
17-37 Away 3-25 Vs BCS Teams
2-2 Neutral 9-7 Off A Bye
25-9 Vs Conference 22-17 Off A Loss

2008 RECORD: (8-5)
RETURNING STARTERS: OFFENSE: 7* DEFENSE: 5
LETTERMEN:
Returning: 52 (27,22,3)
Lost: 22 (12,9,1)

2008 AVERAGE ATTENDANCE: 19,231 (#98)
SUN BELT



DB Jorrick Calvin

STADIUM: MOVIE GALLERY VETERANS STADIUM (30,000) (#106) PLAYING SURFACE: ARTIFICIAL (AstroPlay)

	2000	2001	2002	2003	2004	2005	2006	2007	2008	9Yr Total
Straight Up	9-2	7-4	4-8	6-6	7-5	4-7	8-5	8-4	8-5	61-46
Home	4-0	5-0	3-1	3-0	5-0	3-2	4-1	4-1	5-0	36-5
Away	5-2	2-4	0-7	3-6	2-4	1-5	3-4	4-3	3-4	23-39
Neutral	0-0	0-0	1-0	0-0	0-1	0-0	1-0	0-0	0-1	2-2
vs Conf	0-0	0-0	0-0	0-0	4-2	3-4	6-1	6-1	6-1	25-9
vs Non-Conf	9-2	7-4	4-8	6-6	3-3	1-3	2-4	2-3	2-4	36-37
ATS	0-0	4-3	5-3	4-6	8-4	2-7-1	7-5	8-3	7-5	45-36-1
Home Fav	0-0	0-1	0-1	0-1	4-0	1-1	0-3	3-1	2-2	10-10
Home Dog	0-0	0-0	0-0	1-0	0-2	1-0	1-0	0-0	0-0	4-2
Away Favorite	1-0	1-0	0-0	0-0	0-3	0-1	2-0	2-1	3-1	8-6
Away Dog	0-0	3-2	5-2	3-5	3-0	1-3-1	3-2	2-1	2-1	22-16-1
Neutral	0-0	0-0	0-0	0-0	0-1	0-0	1-0	0-0	0-1	1-2
vs Conf	0-0	0-0	0-0	0-0	3-3	2-4-1	4-3	5-2	5-2	19-14-1
vs Non-Conf	0-0	4-3	5-3	4-6	5-1	0-3	3-2	3-1	2-3	26-22
Off SU Win	0-0	1-2	2-2	1-3	3-4	0-3-1	5-2	6-2	4-3	22-21-1
Off SU Loss	0-0	2-1	2-1	2-3	4-0	2-4	2-3	1-1	2-2	17-15



YR	BOWL/TM RANK	LINE	OPPONENT	SCORE	LAST 5 BOWL GAMES
04	Silicon Valley	-3	Northern Illinois	21-34	Troy's All-Time Bowl Record 1-2
06	New Orleans	+5	Rice	41-17	
08	New Orleans	-4	Southern Miss (OT)	27-30	

2008 STATISTICAL LEADERS

RUSHING	ATT	GAIN	LOST	NET	TD	AVG	PLAYER	TKL	SKS	TFL	PBU	INT	
DuJuan Harris	210	1128	51	1077	11	5.1	Boris Lee	126	4.5	5	4	2	
Jerrel Jernigan	33	261	7	254	1	7.7	Bear Woods	108	2	5	2	0	
Jamie Hampton	52	257	21	236	4	4.5	Sherrod Martin	94	0	7	4	2	
Xavier Moreland	34	227	1	226	0	6.6	Jorrick Calvin	76	0	4	9	2	
Maurice Greer	31	199	5	194	2	6.3	Terence Moore	76	0.5	4.5	3	6	
Kennard Burton	13	98	3	95	2	7.3	Tavares Williams	75	0	3.5	4	3	
Levi Brown	33	95	78	17	0	0.5	Brandon Lang	69	10.5	7	4	0	
PASSING	ATT	COMP	PCT	YDS	TD	INT	PLAYER	TKL	SKS	TFL	PBU	INT	
Levi Brown	326	201	61.7	2030	15	3	Cameron Sheffield	66	5.5	7	3	0	
Jamie Hampton	174	107	61.5	1046	9	8	Dion Gales	62	5.5	10	0	0	
Tanner Jones	15	7	46.7	64	0	0	Trevor Ford	49	0	2	6	0	
RECEIVING	REC	YDS	AVG	TD	LONG	PLAYER	TKL	SKS	TFL	PBU	INT		
Jerrel Jernigan	77	868	11.3	5	86	Maurice Coleman	46	4.5	3.5	1	0		
Kennard Burton	47	492	10.5	1	31	Steve McLendon	40	3	4	0	0		
Andrew Davis	20	286	14.3	2	58	Rashad Roussell	33	3	1.5	0	0		
Gerald Tate	23	238	10.3	1	33	Donnell Golden	31	0	1	0	2		
DuJuan Harris	36	216	6.0	3	29	Xavier Lamb	27	0.5	0	2	1		
Mykel Terry	23	210	9.1	4	38	Daniel Sheffield	22	0	0	0	0		
Cornelius Williams	18	174	9.7	3	24	Courtland Fuller	20	2	1	1	0		
Austin Silvo	12	155	12.9	3	35	Kenny Mainor	14	0	3	0	0		
Zack Marcum	14	135	9.6	0	26	Chris Bowens	14	0	0	1	0		
PUNTING	NO	YDS	AVG	FC	NET	BLK	In20	PLAYER	TKL	SKS	TFL	PBU	INT
Will Goggans	52	2037	39.2	7	36.5	1	18	Trinity Thomas	14	0	0	0	0
KICKING	XP	1-29	30-39	40-49	50+	TOTAL	LONG	PLAYER	TKL	SKS	TFL	PBU	INT
Sam Glasman	48-52	8-9	5-9	7-9	0-2	20-29	48	Jorrick Calvin	27	693	25.7	1	0

OFFENSE - LAST 7 YEARS - DEFENSE

RET	OFF	TOTAL	OFF	OFF	PASS	OFF	SKS	TOTAL	RET	DEF	TOTAL	DEF	DEF	DEF	PASS	DEF	SKS		
STS	PTS	OFF	RUSH	YPC	%	YPP	VS	TURN	STS	PTS	DEF	RUSH	YPC	%	YPP	BY			
7	32.8	414	168	4.9	247	61.0	12.6	13	+6	2008	7	21.3	327	140	3.5	188	54.8	15.4	37
5*	34.0	453	183	4.7	270	60.7	13.3	18	-1	2007	8	24.6	378	195	4.9	183	56.6	15.4	27
7*	22.8	320	129	3.8	191	61.8	14.1	29	-5	2006	3	23.2	345	130	3.7	215	58.0	15.5	36
3	15.9	285	118	3.0	167	50.3	17.9	38	-9	2005	4	22.2	327	143	3.7	184	58.5	14.1	17
8*	23.8	284	167	3.9	117	42.7	11.9	31	+11	2004	9	16.7	311	101	2.7	210	53.4	18.7	40
5*	15.4	294	155	3.6	139	42.4	19.1	34	+4	2003	4	22.7	350	126	3.4	224	59.0	15.4	17
8	18.2	303	176	3.9	127	43.3	16.7	19	-10	2002	8	21.0	277	105	2.8	172	52.1	13.2	30

2008 STATS BY GAME

TU 2008	OPPONENT	FD	Rush-YDS	AVG	CO-ATT	YDS	VS	SKS	DEFENSE
22,307	at Middle Tenn	16	36-164	4.6	17-28	136	2	20	50-84 1.7 20-34 200 5 -2
22,105	Alcorn St	36	50-315	6.3	37-57	421	1	9	24-72 3.0 12-37 48 0 +3
102,989	at Ohio St	15	23-97	4.2	30-43	218	2	17	42-170 4.0 10-17 139 1 -1
52,463	at Oklahoma St	25	23-144	6.3	27-49	272	0	35	62-358 5.8 16-21 254 0 -3
17,191	at Florida Atlantic	20	51-233	4.6	11-24	127	0	20	31-75 2.4 21-41 283 4 +2
19,316	FIU	20	40-137	3.4	19-29	255	1	15	36-83 2.3 22-34 266 7 +3
18,345	at North Texas	29	28-108	3.9	41-51	439	0	22	33-92 2.8 31-52 246 3 +4
10,112	at ULM	22	28-165	5.9	23-36	221	0	21	47-161 3.4 20-32 169 2 -1
19,066	WKU	24	33-131	4.0	30-46	298	1	15	35-121 3.5 15-33 95 4 -1
92,103	at LSU	20	17-64	3.8	34-72	316	1	16	39-119 3.1 21-41 221 1 -2
19,443	Louisiana	26	55-391	7.1	9-20	68	1	12	36-175 5.0 7-15 72 4 +1
16,227	Arkansas St	17	30-156	5.2	15-24	181	0	19	45-160 3.6 17-32 172 2 +3
30,197	† Southern Miss	21	35-73	2.1	26-44	255	4	20	37-146 3.9 20-34 276 4 0
TOTALS		291	449-2178	4.9	319-523	3207	13	241	517-1816 3.5 232-423 2441 37 +6
AVERAGES		22.4	35-168	4.9	25-40	247	2.5%	18.5	40-140 3.5 18-33 188 8.7% 0.5

2004 RESULTS 2005 RESULTS 2006 RESULTS 2007 RESULTS 2008 RESULTS

TU Rank	Pre- Opponent	Line	Score	Post- Rank	TU Rank	Pre- Opponent	Line	Score	Post- Rank	TU Rank	Pre- Opponent	Line	Score	Post- Rank	TU Rank	Pre- Opponent	Line	Score	Post- Rank	
-	at Marshall	+14'	17-15	-	-	Cal Poly	NL	27-10	-	-	Alabama St	NL	38-0	+23'	26-46	-	at Middle Tenn	-6	31-17	-
-	Missouri - #19	+11'	24-14	-	-	UAB	+9'	7-27	-	-	at Florida St - #9	+29'	17-24	+26'	31-59	-	at Alcorn St	NL	65-0	-
-	at New Mexico St	-10	18-22	-	-	at Missouri	+20	21-52	-	-	at Georgia Tech	+17'	20-35	+10'	41-23	-	at Ohio St - #13	+20'	10-28	-
-	at South Carolina	+14	7-17	-	-	at South Carolina	+20	20-45	-	-	at Nebraska - #23</									