

FLORIDA STATE SEMINOLES

POSITION OUTLOOK FOR 2009

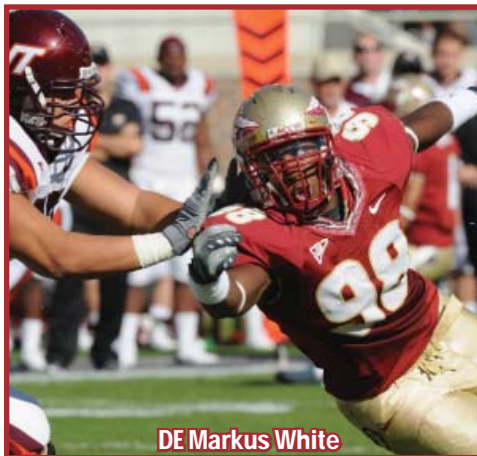
QUARTERBACKS - Drew Weatherford (PS#15) battled Xavier Lee (PS#2) for the starting spot for three years. Weatherford set an ACC Frosh passing record with 3,208 (58.8%) but had an 18-18 ratio in '05. In '06 Weatherford started 10 and threw for 2,154 (55.7%) with a 12-11 ratio. In '07 Weatherford was more secure throwing just 3 int (0.9%, #1 FBS). He threw for 2,049 (56.9%) but had just 9 TD's. Versus VT Weatherford was injured and Lee was susp and they were forced to go to rFr Christian Ponder (PS#22). Ponder hit 8 of 18 for 105 with 2 int and FSU blew a 4Q lead. Surprisingly Weatherford not only lost his starting spot but was the #3 QB in 2008. Ponder threw for 2,006 (55.7%) with a 14-13 ratio and was #3 rusher (423, 3.6). D'Vontrey Richardson got the staff's attention late Aug and played in 10 throwing for 315 (52.3%) while rushing for 254 (7.3) Ponder suffered a back injury prior to Florida and missed the 2H and Weatherford hit 4 of 15 for 61 and guided a TD drive. Weatherford also played late in the bowl hitting 5 of 6 for 77 to finish out his career. Ponder was voted the team's Off MVP and followed it up with a terrific spring in which he didn't throw an int until the spring game. With Richardson moving to S, rFr EJ Manuel (PS#4) is the backup. Manuel missed the spring (injury) and Corey Eddinger (6'0" 179 So, PS#245) got most of the snaps with the 2nd string. Now that Ponder has experience, he should be one of the ACC's top QB's.

RUNNING BACKS - With all of the VHT's and NFL caliber talent HC Bobby Bowden has compiled at the RB position, it's amazing FSU has not had a 1,000 yard rusher S/96 (Warrick Dunn). In '05, FSU had their worst ypg (94, 3.3) rushing S/47 and the run game didn't improve much (97, 3.5) in '06. In '07 Antone Smith (PS#4) rushed for 819 (4.3) and FSU improved to 128 (3.7). WR Preston Parker helped as he was also used at TB rushing for 270 (5.2). Last year it looked like they would add in VHT JJCO Tavares Pressley (PS#27JC) but he was in pre season and RS. Surprisingly Smith's backup was true frosh Jermaine Thomas (PS#81). While Smith started all 13, he was limited in some and had just 792 (4.5). Thomas was not cleared until late Aug but he had 91 in the opener, 130 vs GT and 94 vs Clem where he suffered turf toe. He had just 49 in the final 4 and finished with 482 (7.0). True frosh Carlton "Ty" Jones (PS#197) suffered an ankle inj and only played in 4 (99, 9.0). Parker had just 87 (8.7). This year they lose Smith, Parker and FB Joe Surratt (4 gm). While I like the available talent, this unit could be down a notch with the loss of their top guy.

RECEIVERS - In 2005, Greg Carr (6'6") avg 20.6 on his 30 rec with 9 TD's. In '06 he was #2 with 619 (18.2). In '07 Carr only started 7 but led an inexperienced group with 795 (17.7) while soph Preston Parker added 791 (12.8). Last year those two ret'd although Parker missed 3. Carr led again with 542 (13.9) while Parker was #2 with 372 (only 9.3 ypc). Surprisingly rFr Taiwan Easterling (PS#310) was #3 with 322 (10.7). The unit was hit hard by susp (5 WR's out vs BC). Bert Reed (PS#107) had 295 (12.8) and Rod Owens (PS#68) added 183 (12.2). Hyped PS#14JC Corey Surrency (237, 19.8 in 2 st) showed flashes but his career may be over after the NCAA denied his appeal for an extra year of eligibility in the spring. TE Caz Piurowski (PS#7) missed the first 3 and had just 83 (10.4). Not listed in the PSL below is Timothy Orange (5'11" 189 Jr). This year they lose Carr (12 st), Parker (8 st) and TE Joshua Dobbie (1 rec). Depth was an issue to this unit in the spring with Easterling's Achilles injury, Owens' susp and Surrency's NCAA appeal. I am also surprised there is only one VHT in the 2 deep. I expect a more productive season out of TE Piurowski who was forced to be more of a blocker with FSU's young O-line last year. Even with the loss of their top 2 WR's, they could be just as productive.

OFFENSIVE LINE - The OL struggled in '05 & '06 and in '07 they had to replace 3 starters but brought in OL coach Rick Trickett from W Virg where he had outstanding success. Two frosh and 1 soph earned starting jobs. The group was banged up all year (8

diff st). At one point Trickett was down to just 7 healthy OL's but the unit did improve slightly to 128 ypg rush (3.7) while allowing 22 sacks (4.7%). Last year they had to replace four starters and their 24 career starts returning were the 5th fewest in FBS. What was once a hefty O-line did not have a player over 300 lbs and they adapted to Trickett's system well. Despite being very inexperienced they actually improved to 179 ypg (4.8) allowing 26 sacks (6.7%). LG Rodney Hudson earned 1st TM ACC and 3 true frosh (Zebrie Sanders, David Spurlock and Andrew Datko) combined for 31 starts while rFr Will Furlong started 5 until injury. Seven players who earned starts were underclassmen and are now a year older and in the 3rd year of Trickett's system. This goes from being an inexperienced group to one of the best in the ACC and their 89 starts returning are #22 in the FBS.



DE Markus White

DEFENSIVE LINE - FSU almost always has a tough rush D. In 2006 they had to replace a pair of 1st round DC's and were hit hard by injuries but still allowed just 93 ypg (2.9). Last year they had to replace 3 players (comb 19 st) including #3 and #5 DC's. Three DL's were susp'd a comb 9 games to start the season. Everette Brown emerged as one of the top DE's in the country with 13.5 sacks and was the runner-up for the ACC Def POY. Surprisingly FSU allowed 133 ypg rush (3.8), their worst total since 1995 (142 ypg), but the D did have 39 sacks. This year they lose Brown (13 st, #2DC CAR), DE Neely Moffett (10 st, 19 tkl, 5.5 sk, 1 int), DE Benjamin Lampkin (3 st, 8 tkl) and NG Paul Griffin (1 st, 11 tkl). I like the replacements at DE in PS#1 true frosh Jacobbi McDaniel, PS#1JC Markus White and PS#41 Brandon Jenkins, who was voted the D's Top Newcomer in the spring. While the sack total will likely drop, this unit should be tougher against the run.

LINEBACKERS - In 2007 the Seminoles had to replace #1 and #3 DC's. Last year they had their most experienced LB corps in years, only having to replace a #6DC (#2 tkl) and one backup. This year they lose their top 2 tacklers in Derek Nicholson (13 st, 81 tkl, 15 tfl), Toddrick Verdell (12 st, 66 tkl, 8 tfl, 1 int) as well as Kenny Ingram (4 st, 22 tkl, 3.5 tfl, 1 int). They do return their #4, #7 and #13 tacklers and while this is one of the more inexperienced units on the squad, it's the one that most resembles the FSU teams of the '90's as the top six players are VHT's.

DEFENSIVE BACKS - FSU has had four top 2 finishes in my pass D rankings in the last 15 years. In 2005, they had their worst finish ever at #74 and they moved up to #43 in '06. In 2007 the unit ret'd intact but surprisingly slipped to #50. Last year they only had to replace one starter and two backups. Keep in mind, my rankings account for strength of opp and FSU faced one of the most

lackluster slates of opposing QB's in the country (#113). Despite their strong numbers (162 ypg, 51.2%) their 15-9 ratio had them finish at #60. This year they lose CB Tony Carter (13 st, 2 int, 4 pbu), SS Myron Rolle (12 st, 62 tkl, Lott Finalist, Rhodes Scholar winner), FS Darius McClure (7 st, 25 tkl, 1 int), CB Michael Ray Garvin (15 tkl), S Roosevelt Lawson (17 tkl) and DB Rod Roberts (14 tkl). Despite having just two starters back I cannot imagine the Seminoles having a 5th straight finish out of the Top 40 in my pass D rankings.

SPECIAL TEAMS - FSU normally ranks in the Top 25 of my ST rankings. In 2007 they just missed at #28. Last year they had to replace K Gary Cismesia who hit 27 of 34 FG's with a long of 60 but P Graham Gano (43.4, 35.9 net in '07) took over all 3 duties. Gano was susp the first 2 and Zach Hobby hit just 1 of 4 FG's. Gano returned and won the Lou Groza Award hitting 24 of 26 FG's (long 53), had 9 TB on 37 KO and avg 42.7 (36.4 tm net) on punts. Gano set the school record with 13 straight FG's topping Bill Capece's 1980 record. Michael Ray Garvin improved his KR average to 30.1 including 172 KR yards vs Florida while earning 2nd TM ACC ST honors and Tony Carter (PS#3) did a fine job on PR's (14.1). Naturally with those numbers, FSU finished #3 but this year lose Gano, Garvin and Carter and will likely drop in my rankings.

COACHES - College Football Hall of Famer Bobby Bowden is #2 in Div IA for career wins (382) and is in his 34th season at FSU. In 2007 they brought in a new OC in Jimbo Fisher who was LSU's OC the previous 7 years but surprisingly the team had its lowest ppg (23.3) since 1981 (21.8). In Fisher's 2nd year the team improved to 33.4 and he was named the successor in waiting to Bowden and took over many duties, even some on game day. DC Mickey Andrews is now in his 26th year and Bowden added Chuck Amato in 2007 as the Executive HC/LB coach (NCSt HC 7Y, 2000-06).

PHIL'S FORECAST

FSU had an amazing run of 14 straight years of finishing in the Top 5 in the final polls but has not been back since 2000! In 2005, they had an inexperienced and injury-plagued squad that got as high as #4 before losing to Virginia on the road. FSU was 7-1 but then suffered 3 straight losses for the first time since 1983. At the time their 3 ACC losses were the most ever, but they still took home the Atlantic Title and upset VT to win their 12th ACC Title. Despite the ACC Title, they were only +28.5 ypg (6th best). FSU was the only team in the country to appear in a Jan bowl every year for the last 15 years heading into '06. In '06, they "earned" 39 points in my Draft Day Party Hangover (pg 308). FSU opened up #11 but surprisingly went just 7-6 including their first-ever shutout loss at home under Bowden (31 yrs) as WF beat them 30-0. They had a big 4Q in their bowl to rally past UCLA and squeak out a winning season. After having just 9 scholarship seniors in '06, they had 18 in '07 and with the infusion of new coaches, things looked to be on the rise. Surprisingly FSU finished just 7-6 after coming up short in the bowl with about 2 dozen players susp or injured. They finished 3rd in the Atlantic and had 35 missed starts due to injury. Last year they had 15 ret starters (4th most ACC), their most since the '99 Nat'l Championship team and only 17 lettermen lost. FSU basically had 8 HG's last year but unfortunately had some key players susp the first 3. While the first 2 were vs FCS foes, the 3rd was vs WF. After a 12-3 home loss to WF, they throttled Col and beat Miami much worse than the 41-39 margin indicates (led 31-10 3Q). They survived a Thurs night road test at NCSt 26-17. VT had a 10-0 lead but lost their top QB's and FSU rallied for a 30-20 win. The Noles were 6-1 and #16 and while they trailed GT 24-10, they had a 2nd & gI at the 3, down by 3 but fumbled into the EZ for a TB. After whipping Clemson, they gave up an early 87 yd IR TD vs BC and lost by 10. MD was leading the ACC Atlantic but FSU buried them on the road 37-3 making them 3-1 in ACC road play. They narrowly missed out on the ACC Title game tying BC for 1st place. After getting whipped by Fla, they throttled Wisc in the bowl. FSU was +46 ypg in ACC play (2nd best). While their 8 starters back on off are the most S/04, I'm surprised by the small amount of VHT's at the skill RB and WR positions. FSU's opp's were 101-55 (64.7%) LY which is the highest winning % of any team's foes this year. Eleven of the 12 had winning records and the other (NCSt) was in a bowl but finished 6-7.

This year's non-conf foes include BYU, USF and Fla with 2 of them on the road. This figures to be the best FSU team since 2004 and despite the tough schedule, they are a prime contender in the Atlantic.

TOP NEWCOMERS FOR 2009

- DL Jacobbi McDaniel 6-0 267 PS#1
- DL Greg Reid 5-9 175 PS#9
- RB Lonnie Pryor 6-1 195 PS#18
- DL Demonte McAllister 6-3 263 PS#29
- DL Jajuan Harley 6-2 190 PS#34
- LB C J Mizell 6-2 212 PS#20
- RB Chris Thompson 5-8 173 PS#29
- DL Brandon Jenkins 6-2 240 PS#41
- WR Willie Haulstead 6-3 210 PS#36
- WR Aubrey Phillips 6-6 310 PS#49
- OL Rodney Smith 6-6 208 PS#47
- DB Gerald Demps 5-10 190 PS#63
- K Dustin Hopkins 6-2 174 PS#1
- DB Justin Rhodes 6-0 180 PS#72
- DB Xavier Brought 6-2 195 PS#73
- OL Henry Orelus 6-2 292 PS#95
- OL John Prior 6-6 283 PS#115
- OL Bryan Stork 6-6 240 PS#174
- QB Will Secord 6-3 204 PS#117
- DL Dan Hicks 6-4 251 PS#247
- DL Garrett Faircloth 6-6 288 PS#369DL '08

OFFENSE 2009 PROJECTED STARTING LINEUP

QB 7 CHRISTIAN PONDER JR. 6-2 217 PS#22. 1 gm, 105 (44%) 1-2 ratio rFr. 13 st, 2006 (56%) 14-13 ratio, 423 rush. EJ Manuel (6'4" 223 rFr) PS#4. Corey Eddinger (6'0" 179 So).
RB 38 Jermaine Thomas So. 6-1 190 PS#81. 482 (7.0), 12 gm as true. **39** Tavares Pressley (6'1" 202 Jr) PS#27JC. MedRS LY. Carlton "Ty" Jones (5'11" 203 So) PS#197. 99 (9.0).
WR 8 TAIWAN EASTERLING SO. 5-11 187 8 st, 322 (10.7) 10 No spg. **FB 35 MARCUS Surrency** (6'0" 230 Sr) PS#13. 8 st, 118 (2.8) 3Y. Seddrick Holloway (5'10" 265 Sr) PS#124. 8 st, 129 (5.0). 3Y.
WR 83 Bert Reed So. 5-11 165 PS#107. 1 st, 295 (12.8). Jamron Fortson (6'3" 223 So) PS#75. 1 st, 137 (17.1). Rodney Smith is PS#47. Louis Givens (5'8" 170 Sr) 8 rec '08.
WR 14 Avis Comack So. 6-4 195 PS#89.5 gm true. Richard Goodman (6'0" 191 Sr) 247 (9.1) 3Y. MedRS LY. Rod Owens (6'0" 183 Sr) PS#68. 357 (11.9) 3Y. Cameron Wade (6'6" 209 So) PS#144.
TE 81 CAZ PIUROWSKI SR. 6-7 271 PS#7. 2 st, 55 (7.9) true. 6 st, 57 (11.4) 07. 9 st, 83 (10.4) LY. **85** Ja'Baris Little (6'4" 226 So) PS#21. 1 st true. Bo Reliford (6'7" 241) PS#21. 1 rec true.
C 60 RYAN McMAHON JR. 6-3 282 13 st @C, Frosh AA rFr. 13 st @C, 872 pl, 24 kd, HM ACC LY. **63** AJ Ganguzza (6'3" 268 So). 4 gm rFr. **LS 65 Zaack Aronson** (6'6" 209 So) PS#143.
RG 79 DAVID SPURLOCK SR. 6-5 285 PS#103.8 st, 13 gm, 37 kd, 1 sk all'd, 31 kd true. Brandon Davis (6'2" 281 Jr), 13 gm, 2Y. Will Furlong (6'5" 276 So) PS#157. 5 st, 6 gm inj rFr. Return ?.
LG 62 RODNEY HUDSON JR. 6-2 285 PS#103. 10 st, 11 gm, Frosh AA true. 13 st, 893 pl, 64 kd, 1st TM ACC LY. **71** Evan Bellamy (6'4" 300 Jr). 1 st '07. Inj LY. Jacob Stanley (6'2" 270 So).
RT 77 ZEBRIE SANDERS SR. 6-5 288 PS#37. 11 st, 13 gm, 654 pl, 1 sk all'd, 31 kd true. Antwane Greenlee (6'6" 293 So) PS#24. 3 st, 7 gm, 224 pl, 14 kd rFr. Aubrey Phillips is PS#49.
LT 67 ANDREW DATKO SO. 6-6 283 PS#136. 12 st, 13 gm, 852 pl, 21 kd, Frosh AA true. Rhonne Sanderson (6'4" 288 So) PS#251. 1 gm, no RS as true. Garrett Faircloth is PS#369 '08.
K NA Dustin Hopkins Fr. 6-2 174 PS#1. 1st TM AA, hit 65 yd FG in HS. **41** James Escro (6'1" 205 So). 48 KO (59.5), 5 TB as true. Nathan O'Jibway (6'3" 245 So). 1 KO rFr.

DE NA Jacobbi McDaniel Fr. 6-0 267 PS#1. 10 skas Sr in HS. **95** Kevin McNeil (6'2" 257 Sr) PS#24. 2 st, 10 gm, 16 tkl true. Susp '07. 10 tkl, 4 sk, 12 gm LY. Brandon Jenkins is PS#41.
DT 94 JUSTIN MINCEY SR. 6-5 272 PS#17. 4 st, 9 tkl 2Y. 4 st, 9 tkl, 4.5 tfl LY. **Budd Thacker** (6'2" 276 Sr) PS#124. 2 st, 14 tkl true. 8 st, 23 tkl, 4.5 tfl '07. **10 st**, 18 tkl, 3 tfl LY.
DT 56 KENDRICK STEWART SR. 6-2 271 PS#35. 5 st, 13 tkl, 2Y. 9 st, 22 tkl, 4.5 tfl LY. **93** Evertt Dawkins (6'2" 258 So) PS#79. 2 tkl true. **20** Moses McCray (6'2" 298 So) PS#49. 2 st, 8 tkl LY.
DE 98 Markus White Sr. 6-4 261 PS#3JC. 29 tkl, 5.5 tfl LY. **55** Jamar Jackson (6'4" 240 So) PS#48. 1 tkl rFr. Toshmon Stevens (6'5" 228 So). 1 tkl, 2 gm true. Joshua Rodriguez (6'1" 297 So).
SLB 36 DEKODA WATSON SR. 6-2 226 PS#45. 73 tkl, 11.5 tfl 2Y. 7 st (susp), 46 tkl, 8 tfl LY. **12** Nigel Carr (6'3" 230 So) PS#18. 4 tkl true. Mister Alexander (6'2" 227 Jr) PS#72. 1 gm LY.
MLB 29 Kendall Smith Jr. 6-1 224 PS#21. 6 tkl true. **11** Vince Williams (6'0" 245 So) PS#24. 10 tkl true. Aaron Gresham (6'2" 237 So) PS#117. Vincent Zann (6'0" 223 So).
WLB 13 Nigel Bradham So. 6-2 235 PS#4. 29 tkl, 1 tfl true. **44** Maurice Harris (6'0" 212 So) PS#38. 3 gm (inj), Med RS '07. 1 tkl LY. Ricardo Wright (6'2" 226 Sr) PS#85. 17 tkl 2Y. 18 tkl LY.
CB 28 Dionte Allen So. 5-11 172 PS#8. 3 tkl, 5 gm rFr. **15** Ochuko Jenije (5'10" 188 Jr) PS#4. 2 tkl rFr. 11 tkl LY. Greg Reid is PS#9. Ed Imekoipaka (6'0" 186 rFr). No spg (inj).
CB 21 PATRICK ROBINSON SR. 5-11 194 PS#52. 11 tkl true. 5 st, 28 tkl, 12 pd, HM ACC '07. 8 st, 26 tkl, 5 pd LY. **26** AJ Alexander (5'11" 180 rFr) PS#20. **10** Nick Moody (6'1" 235 rFr) PS#23.
ROW 22 Corey Mangum Sr. 6-0 202 PS#29. 13 tkl 2Y. 5 st, 27 tkl, 7 pbu LY. **27** Terrance Parks (6'1" 196 So) PS#47. 2 tkl, 7 gm true. **31** Ventoure Watkins (6'3" 181 So). 1 tkl, 3 gm LY.
FS 20 JAMIE ROBINSON SR. 6-2 188 PS#25. 5 st, 26 tkl rFr. 17 tkl, 10 gm 07. 6 st, 37 tkl, 3 pd LY. D'Vontrey Richardson (6'1" 214 Jr) PS#29. Moved from QB. 315 pass, 254 rush (7.3) LY.
P 45 Shawn Powell So. 6-5 217 PS#54. 18 punts (41.1), tm net 36.4, long of 56. 13 of 50+ yds, 4/120, 12 gms as true. **9** Kevin Campbell (6'0" 184 Sr) PS#76. Walked on LY.

