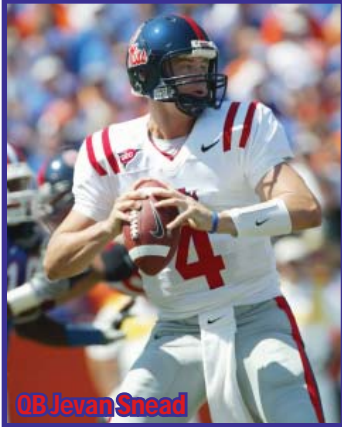


MISSISSIPPI REBELS

POSITION OUTLOOK FOR 2009

QUARTERBACKS - Eli Manning (PS#12) set or tied 47 school records and departed after the 2003 season (#1DC) and guided the NYG to a Super Bowl win in '07. The next 4 years Rebel QB's combined to hit 51%, 53%, 48% and 51%. Last year Nutt benefited from the transfer of Jevan Snead (PS#4) who played in 8 as a true frosh at Texas throwing for 371 (87 rush). Snead had some ups and downs last year completing just 56.3% but he threw for 2,762 with a 26-13 ratio and finished strong completing 65.8% in the final 3. Billy Tapp (PS#294) was the backup and played in 5 (att). This year I expect Snead's backup to be Fr Nathan Stanley (PS#36). Snead should be one of the top QB's in the NCAA and Nutt said he was a vastly improved QB in the last 6 games of 2008.



QB Jevan Snead

RUNNING BACKS - In 2007 BenJarvus Green-Ellis became just the second player in Ole Miss history to top 1,000 twice in a career with the other being Kayo Dottley (49-'50). Green-Ellis, a powerful back, rushed for 1,137 (4.9) in '07. Last year they had to replace their top 2 RB's but had a very deep backfield despite the fact that their leading returnee from '07 was RB/WR Dexter McCluster who had just 63 yards. McCluster also took snaps out of the Wild Rebel formation and lead the team with 655 (6.0). Cordera Eason (PS#19) who has impressive speed for his size (224 lbs) was #2 with 647 (4.6). True frosh Brandon Bolden (PS#147) was surprisingly #3 with 542 (5.5) including 101 (9.2) in the bowl. I say surprisingly because Enrique Davis (PS#4) was expected to be a big factor but had trouble pass blocking and only rushed for 244 (3.8). Derrick Davis (5'10" 224 Jr, PS#45) added 98 (4.7). Not listed below are FB's Devin Thomas (5'10" 200 So, PS#44) who Nutt regretted not RS LY. Andy Hartmann (5'10" 243 Sr, HR Greer (6'0" 225 Fr, PS#269), Ben Benedetto (6'1" 240 Jr), Colby Landers (6'0" 243 Sr) and RB's Andre Sterling (5'9" 206 Fr) and Dan Hoffman (6'0" 222 So). The entire backfield returns with the exception of FB Jason Cook (47 rec yds, 7 st), so they are more experienced.

RECEIVERS - The Rebels ret'd their top 10 rec in 2007 from an underwhelming unit. They showed some solid improvement with Mike Wallace leading with 716 (18.8). Shay Hodge had 593 (13.8) and Dexter McCluster added 326 (12.1). Wallace led again in '08 with 784 (20.1). Hodge was #2, McCluster #3 and soph Lionel Breaux was #4. Nutt signed 6'6" Melvin Harris whom he compared to CAR Panther Marcus Monk. Nutt also signed 2 TE's in EJ Epperson and Ferbia Allen whom he feels could be special. This year they lose their top guy in Wallace (7 st, #3DC PIT), Chris Adams (4 gm) and TE David Traxler (PS#1260L, 4 st, 0 rec) but add PS#5 true frosh Pat Patterson. Not listed below are JD Lawhorn (6'1" 180 Sr, PS#84), Richie Contartesi (5'7" 163 Jr), William Cole (5'11" 190 Sr), Garrett Ryan (6'3" 234 Sr), Artis Ford (6'2" 180 So), Brandon Johnson (6'1" 184 Sr) and Layton Jones (6'4" 215 Jr). This group could be even stronger.

OFFENSIVE LINE - In 2005 Michael Oher (PS#11) became the third Rebel true frosh starter on the O-line since Terrence Metcalf in 1997. John Jerry (PS#60) also started as a true in '06. In 2007 they only had to replace one starter and improved to 4.2 ypc with 28 sacks allowed (7.2%). Oher was projected to be a #1DC but opted to return and was 1st Tm AA (47 straight st). He won the SEC's Jacobs Blocking Trophy. The Rebels had 4 starters back LY and improved to 186 ypg (4.7) while allowing just 20 sacks (5.9%). Their 4.7 ypc was the best since 1961. This year they lose Oher (13 st, #1DC BAL), RG Maurice Miller (12 st, 3Y st) and LG Darryl Harris (7 st). Reid Neely had 12 starts at LG in '07 and started the last six in '08, so basically three starters return with 5 VHT's as proj starters. This is a solid O-line with a 322 lb avg (3rd best NCAA) but is less experienced and probably will not match 2008's numbers.

DEFENSIVE LINE - Ole Miss had 7 of their top 8 back on the DL in '07 but still allowed 199 ypg (4.7), their worst total S/'01. Despite the poor rush defense, DE Greg Hardy led the SEC in sacks/gm (10 tfl) while only starting 4 (susp 2.5 gm). DT Peria Jerry earned 2nd Tm SEC. Former HC Ed Orgeron, a longtime DL coach, said that Lawon Scott and Ted Laurent (PS#33) are two of the best tackles he's been around in awhile. Last year they had to replace 5 players who combined for 21 starts (59 tkl) but returned their 2 stars and added PS#19JC Emmanuel Stephens. Stephens had just 2 starts and Hardy, who had foot surg in Aug, missed the first 3 and did not start any but still had 8.5 sacks. Hardy, Jerry and Laurent all missed the opener. Jerry had a dominating season and was named 1st Tm AP AA with 7 sacks and 11 tfl from his DT position. This year they lose Jerry (11 st, #1DC ATL), DE Chris Bowers (23 tkl, 1.5 sk) and Jermy Parnell (1 tkl, 1 tfl). They basically had 2 starters back LY and this year have 3 and I expect Hardy to have his most productive season yet. DT Jerrell Powe (340 lbs, PS#2), who originally signed in '05 and was finally eligible LY, will have a bigger impact. This has the makings of one of the best DL's in the country despite the loss of their star Jerry and super DL coach Tracy Rocker.

LINEBACKERS - In '07 they had to replace Patrick Willis, who became the Rebels' first defensive 1st round DC S/'94 (Tim Bowens), as well as their #2 tackler. Basically they had zero returning starters at LB. That was the main reason they allowed 4.7 ypc. Last year 7 ret'd with starting experience and I said it should be one of the nation's most improved LB corps. A quick check of the rush D proves my point as the Rebels' D allowed just 86 ypg and a startling 2.7 ypc. They actually lost 2 players (comb 13 st, 92 tkl) prior to the season so they actually had 2 returning starters. This year they lose WLB Ashlee Palmer (11 st, 50 tkl, 5 tfl) and MLB Tony Fein (2 st, 52 tkl) who were #3 and #4 tkl'rs. While they have 2 starters back, they were just #6 and #8 tkl'rs. The starters are 3 VHT's, all with starting exp. This is a solid group but may be down a notch in 2009.

DEFENSIVE BACKS - Ole Miss finished just #72 and #86 in my pass D ranking in Orgeron's last two years. Despite having 7 of their top 8 DB's back, Nutt moved WR Marshay Green and RB Jeremy McGee into the unit. Green beat out returning starting CB Dustin Mouzon (11 st '07). Johnny Brown (PS#36) who started the last 7 as a true frosh, also lost his spot. They only moved up to #54. This year they lose SS Jamarca Sanford (#2 tkl'r, 13 st, #7DC MIN), Mouzon (6 st, 23 tkl) and Terrell Jackson (13 tkl). Green and McGee (UCLA trans, 20 tkl '08) are in their 2nd year at CB and VHT Brown steps into the open SS role. They also add Demareo Marr (PS#56JC) who RS and PS#7 true frosh Darius Barksdale! Not listed in the PSL are Kyle Horine (5'10" 185 rFr), Zane Allcorn (5'10" 198 So), Julian Whitehead (5'9" 190 rFr, PS#378), Griffin Littlefield (5'10" 185 rFr), Hubert Davis (5'10" 200 So), Rudy Wilson (6'0" 200 rFr) and Bruce Williams (6'2" 182 Jr). I'll call for the Rebels to have their best finish in my pass D rankings since at least 2004.

SPECIAL TEAMS - In Ed Orgeron's three seasons Ole Miss finished #91, #26 and #74 in my ST rankings with part of 2007's problem being zero TB on KO. Everyone ret'd last year and Mike Wallace emerged and set a UM single season yardage record with

861 (24.6) despite having no KR in the first 3. PR Marshay Green improved to 10.9 (4.0 in '07). P Rob Park took over for PS#7 Justin Sparks (33.1 net '07) and improved the net to 36.5. The team was also successful on 4 fake punts. Sparks had 10 TB on 72 KO and Joshua Shene set UM's single-season record with 52 xp's and has now made 74 in a row. He also hit 17 of 21 FG's (long 47). This year they lose Park and Wallace but they have a chance to finish in the top 40 again this year (#36 LY).

COACHES - In '05 openly questioned the firing of David Cutcliffe who had guided this team to 4 bowls in his 6 years including a '03 season in which they finished #13. He was let go after his FIRST losing season. In the 3 yrs after his departure, Ole Miss under Orgeron lost more games each year than Cutcliffe lost in his worst ssn. Ole Miss made a great hire LY bringing in Houston Nutt who resigned under pressure at Ark. Nutt, was the SEC Coach of the Year in '01 and '06 and guided the Hogs to B2B Jan 1 bowls. LY Nutt was co-SEC COY with Saban and VU's Johnson. His OC is Kent Austin who was the HC of Saskatchewan, the CFL title winner in '07. He was a QB at Ole Miss from '81-'85. Tyrone Nix is the DC and was the DC at SC the previous 3 years and at S Miss from '01-'04.

PHIL'S FORECAST

Heading into 2004, Ole Miss was the only team in the SEC West to be bowl eligible for 7 straight years but ironically, they are the only SEC West team without a trip to the SEC Championship game. Ole Miss' last SEC Title was in 1963. From 1954-1971, Ole Miss went to 17 bowls (9 NY's Day). From 1972 to 1996, they were in just 5 bowls with only one New Year's Day game. Scholarships were short when David Cutcliffe took over but he finally got the team to its full allotment in 2002. In '03, I said Ole Miss had its best team in over a decade and called for them to notch at least 9 wins. They went 10-3 led by QB Eli Manning including a win in the Cotton Bowl. In 2004, it looked like a rebuilding year losing Manning and 7 defensive starters. The team was also hit by the injury bug and went 4-7. Stuningly, they opted to fire HC David Cutcliffe and I talked about them possibly being "Baylor'd" (see Coaching Changes pg 309). Over the next 3 years Ole Miss finished dead last in the SEC West twice with a 3-21 record in SEC play and was -92.3 ypg in '05 (2nd worst), a league worst -107.3 ypg in '06 and -68.9 ypg in '07 (2nd worst). While Ed Orgeron (HC '05-'07) did not have a lot of success on the field, he did have a lot of success recruiting and Houston Nutt stepped into a tremendous situation last year. He inherited a team with 11 of the top 12 tacklers back from '07 and UM was also -10 in TO's. While they were coming off their first winless SEC season (0-8 S/'82, they made my Most Improved List meaning I thought they would get to a bowl. Ole Miss' strength last year was their line play as their OL and DL ranked among the Top 10 in the country. The Rebels finished 9-4 but could have easily had a stronger record. After whipping Memphis 41-24, WF got a 41 yd FG with :03 left to pull out a 30-28 win. Two weeks later UM had a dominating 385-202 yd edge vs Vandy but fumbled into the EZ for a TB at the end and were done by 4 int including an IR TD and lost. At 2-2 they upset #4 Fla in The Swamp but then in a letdown spot the next week lost to SC 31-24. Against Alabama they trailed 24-3 at the half but only lost by 2. After beating Ark on the road, they had five comfortable wins including a 31-13 thrashing of #18 LSU on the road in which they had a 409-215 yd edge. They were an underdog to TT in the bowl and rolled to a 47-34 win. **Sounding a lot like last year's situation at Alabama, all of Ole Miss' losses were by 7 pt or less (comb 19 pt).** Last year's squad was fortunate to only have 8 starts lost to inj (#10 FBS). While Ole Miss does have some significant losses from LY's team and will not sneak up on anybody this year. They do have 8 starters back on both offense and defense from a squad that outgained SEC foes by 80.9 ypg (3rd best) and have a very manageable schedule. Five of my 9 sets of power ratings call for Ole Miss to go unbeaten and I will call for their 1st Top 10 finish in the AP poll since 1969 (#8).

TOP NEWCOMERS FOR 2009

- WR Pat Patterson 6-3 215 PS#5
- DB Darius Barksdale 6-0 190 PS#7
- DB Jamar Hornsby 6-3 215 PS#20JC
- DL Craig Drummond 6-5 260 PS#22
- OL Logan Clair 6-5 305 PS#62JC
- OL Bobbie Massie 6-7 345 PS#37
- RB Rodney Scott 5-9 195 PS#39
- LB Willie Ferrell 6-0 220 PS#34
- QB Raymond Cotton 6-4 220 PS#37
- RB Gabriel Hunter 5-11 185 PS#62
- DL Eric Smiley 6-5 280 PS#72
- RB Tim Simon 6-2 210 PS#71
- QB Clayton Moore 6-2 205 PS#49
- LB Mike Marry 6-3 225 PS#74
- Frank Crawford 6-1 170 PS#95
- LB DT Shackelford 6-1 230 PS#61
- DB Jesse Grandy 5-11 180 PS#08
- DL DeMarcus Knight 6-2 230 PS#184
- OL Emmanuel McCray 6-4 280 PS#101
- DL Corey Gaines 6-1 280 PS#118
- WR Montez Phillips 6-3 310 PS#98
- OL Michael Brown 6-5 310 PS#131
- DL Artice Kellam 5-11 180 PS#136
- LB Joel Kight 5-11 220 PS#120
- DL Mike Thomas 6-4 270 PS#161
- OL Evan Swindall 6-3 285 PS#168
- RB Ryan Campbell 6-0 175 PS#180
- RB Korvic Neat 5-8 170 PS#143
- OL Taylor Quick 6-4 309 PS#244JC
- DB Dele Jurnad 6-3 195 PS#212
- DL Alex Williams 6-4 215 PS#210
- WR Terrell Grant 6-3 200 PS#177
- K Andrew Ritter 6-3 200 PS#21
- RB Stephen Houston 5-10 210 PS#192
- WR Ja-Mes Logan 6-2 195 PS#196
- DB Charles Sawyer 5-10 180 PS#263
- K Tyler Campbell 6-2 210 PS#280
- DL Cameron Whigham 6-3 230 PS#282
- TE Z. Mason 6-5 255 PS#96
- OL AJ Hawkins 6-3 315 PS#333 '08
- DB Nick Lanciuli 5-10 209 PS#539

OFFENSE

JERSEY # IN RED

2009 PROJECTED STARTING LINEUP

JERSEY # IN RED

DEFENSE

QB 4 JEVAN SNEAD JR. 6-3 215 PS#4. 371 pass true at Texas. 13 st LY, HM SEC, 2762 pass (56%) 26-13 ratio. **12** Nathan Stanley (6'5" 200 rFr) **PS#36**. Billy Tapp (6'4" 230 Sr), **RB 25 CORDERA EASON SR.** 5-10 224 PS#19. 12 st, 647 rush (4.6) LY. **34** Brandon Bolden (5'11" 220 So) PS#147. 542 (5.5) as true. **27** Enrique Davis (6'0" 247 So) **PS#4**. 244 (3.8). 12 gm. **WR 22 DEXTER MCCLUSTER SR.** 5-8 165 PS#309. 16 st, 1183 (13.8) 3Y. 655 rush (6.0) LY. Lionel Breaux (6'0" 191 Jr) PS#121. 5 st, 178 (14.8). **FB** Derrick Davis (5'10" 224 Jr) **PS#45**. 98 (4.7). **WR NA Pat Patterson Fr.** 6-3 215 PS#5. Montez Phillips (6'3" 190 Fr) PS#98. Melvin Harris (6'6" 209 Jr) PS#308. Terrell Grant PS#177. Jarcarius Lucas (6'2" 188 Sr) PS#379JC. **WR 3 SHAY HODGE SR.** 6-1 207 PS#127. 2 st, 593 (13.8) '07. 12 st, 725 (16.5) LY. **16** Mark Keith Summers (6'2" 197 Jr) **PS#37**. 5 st, 5 rec 2Y. **19** Andrew Harris (6'2" 200 So) 3 rec. **TE 80 GERALD HARRIS SR.** 6-5 250 PS#153JC. 6 st, 84 (12.0). **32** Reggie Hicks (6'1" 234 Jr) PS#102. **33** EJ Epperson (6'3" 230 rFr) PS#82. **83** Ferbia Allen (6'4" 225 rFr) PS#124. **C 72 DAVERIN GERALDS SR.** 6-2 312 PS#63. Former DL. 13 st C LY. **65** Mark Jean-Louis (6'2" 355 Sr) PS#113JC. Evan Swindall is PS#168. **LS** Preston Powers (6'0" 240 Sr). **RG 75 Rishaw Johnson So.** 6-4 295 PS#101. 62 gm LY. **50** Taylor Quick (6'4" 309 Jr) PS#244JC. In for spg. Emmanuel McCray is PS#49. **62** Don Mosley (6'1" 300 Jr) 1 gm LY. **LG 71 REID NEELY SR.** 6-6 310 PS#85. 12 st LG '07. 7 st (1RG, 6LG), 13 gm LY. **63** Brandon Green (6'2" 300 Sr) PS#127JC. 8 gm. AJ Hawkins (6'3" 315 Fr) PS#333 '08. **RT 77 JOHN JERRY SR.** 6-5 350 PS#60. 12 st RG true. 9 st RG '07. 13 st RT LY. **2nd Tm SEC 54 Logan Clair (6'5" 305 Jr) PS#62JC.** In for spg. Joshua Tatum (6'5" 315 rFr) PS#226. **LT NA Bobbie Massie Fr.** 6-7 345 PS#37. Bradway Sowell (6'7" 310 So) PS#81. 13 gm LY. **73** Alex Washington (6'4" 337 So) PS#196. Michael Brown (6'0" 315 Fr) PS#131. **K 93 JOSHUA SHENE SR.** 5-8 170 PS#31. 25-34 FG L52 '06-'07. **1st Tm SEC LY**. 17-21 FG L47. Bryson Rose (5'11" 182 rFr). Case Cooper (5'11" 167 So). David Hanks (6'3" 213 So).

DE 40 KENTRELL LOCKETT JR. 6-5 240 PS#42. 13 st, 36 tkl, 11.5 tfl LY. **86** Greg Hardy (6'4" 265 Sr) 1st Tm SEC '07. 64 tkl, 10 sk, 8.5 tfl. **2nd Tm SEC LY**. 8.5 sk. Gerald Rivers (6'2" 230 rFr). **DT 96 Lawon Scott Jr.** 6-1 322 PS#330. HM SEC LY, 21 tkl, 2.5 tfl. **93** Justin Smith (6'4" 280 So) PS#176. 6 tkl true. **11** Craig Drummond (6'5" 260 Fr) **PS#22**. In for spg. **19** **TED LAURENT JR.** 6-0 303 PS#33. 7 st, 24 tkl, 7 tfl LY. **57** Jerrell Powe (6'2" 340 Jr) PS#2. 8 tkl, 3.5 tfl LY. Eric Smiley is PS#72. **34** LaMark Armour (6'2" 260 Sr) 2 gm, 3Y. **DE 92 MARCUS TILLMAN SR.** 6-4 260 PS#6. 36 st, 89 tkl, 15.5 tfl 3Y. Emmanuel Stephens (6'3" 235 Sr) PS#19JC. 2 st, 18 tkl, 5.5 tfl. Antonio Turner (6'2" 240 Sr) PS#127RB. 2 st, 8 tkl '07. **MLB 7 Patrick Trahan Sr.** 6-3 225 PS#60JC. 14 tkl Aub '06. 2 st, 29 tkl, 4.5 tfl here LY. Willie Ferrell is PS#34. **37** Lekenwick Haynes (6'3" 205 rFr) PS#368. Trey Trip (6'1" 230 So). **MLB 51 JONATHAN CORNELL JR.** 6-1 225 PS#114. 20 tkl, 5 pbu. George Helow (5'10" 180 Jr) 8 tkl. **53** Jason Jones (6'2" 220 rFr) PS#167. Mike Marry is PS#74. Marquis Jenkins (6'1" 238 rFr). **SLB 9 ALLEN WALKER JR.** 6-1 215 PS#13DB. 13 tkl '07. 9 st, 4 tkl, 4 tfl LY. Lamar Brumfield (6'0" 224 Sr) PS#124JC. 3 st, 28 tkl 2Y. Don Hargroder (6'1" 200 Sr) PS#329. 2 tkl 2Y. **CB 8 MARSHAY GREEN SR.** 5-9 170 PS#70. 50 rec (8.7) '06-'07. 12 st CB LY. 32 tkl, 6 pbu, 2 int. Jeremy McGee (5'10" 178 Jr) PS#114. 20 tkl, 5 pbu. George Helow (5'10" 180 Jr) 8 tkl. **CB 24 CASSIUS VAUGHN SR.** 5-10 185 PS#114RB. 3 st, 48 tkl '07. 9 st, 43 tkl, 4 pbu, 3 int LY. **15** Demareo Marr (6'2" 180 Jr) **PS#56JC**. Marcus Temple (5'9" 181 So) 1 st, 22 tkl LY. **SS 20 Johnny Brown Jr.** 5-11 207 PS#36. 36 st, 60 tkl true. 28 tkl LY. Derrick Herman (5'11" 185 So) 3 tkl. Fon Ingram (5'11" 190 Jr) PS#193. 21 tkl 2Y. Brandon Sanders (6'0" 190 Fr). **FS 1 KENDRICK LEWIS SR.** 5-11 192 PS#54. 7 st, 57 tkl '07. 13 st, 85 tkl, 4 int LY. Darius Barksdale (6'0" 190 Fr) **PS#7**. Jamar Hornsby (6'3" 215 Jr) **PS#20JC**. Jared Mitchell (6'3" 180 Fr). **P 89 Justin Sparks Sr.** 6-2 187 PS#7. 51 punts, 39.7 avg, 33.1 net in '07. 10 TB/72 KO LY. Tyler Campbell (6'2" 210 Fr) PS#24. Bryan Powers (6'0" 217 Jr) 38.5 avg at JC.

MISSISSIPPI REBELS

Oxford, Mississippi
Weather (601) 354-3333

HOUSTON NUTT (Career 89-58) (FCS 31-16)
Bowls: 3-5
Boise St '97
Arkansas '98-'07

Date	Opponent	T U R F	L I N E	Final Score		W L
				UM	Opp	
Sep. 6	at Memphis (Sun)	A				
Sep. 12						
Sep. 19	SE Louisiana	A				
Sep. 24	at S Carolina (Thur)	G				
Oct. 3	at Vanderbilt	G				
Oct. 10	Alabama	A				
Oct. 17	UAB (HC)	A				
Oct. 24	Arkansas	A				
Oct. 31	at Auburn	G				
Nov. 7	Northern Arizona	A				
Nov. 14	Tennessee	A				
Nov. 21	LSU	A				
Nov. 28	at Mississippi St	G				
Dec. 5						

CAREER PASSING LEADERS
1. Eli Manning 10,119 '00-'03
2. Romaro Miller 6,311 '97-'00
3. Kent Austin 6,184 '81-'85

CAREER RUSHING LEADERS
1. Deuce McAllister 3,060 '97-'00
2. Joe Gunn 2,749 '98-'01
3. Kayo Dottley 2,654 '47-'50

CAREER RECEIVING LEADERS
1. Chris Collins 2,621 '00-'03
2. Willie Green 2,274 '86-'89
3. Grant Heard 2,029 '96-'00

These schools are only 85 miles apart & Ole Miss leads the series 46-10-2 winning the last 4. The Rebels are 12-1 in season openers with the last 5 vs Memphis.

First meeting. The Lions went 5-7 as members of the Southland Conf in '08. Ole Miss is 11-3 the last 14 home openers, but just 2-3 the last 5 years.

Ole Miss has lost their SEC opener in each of the last 5 years (2-14 L/16). UM is 5-1 the L/6 in this series. DC Nix faces his former team (DC at SC '05-'07).

Mississippi has won 12 of last 16 in this series but the visitor is just 2-6. Last yr UM had 6 TO's but still was 1&goal at the 7 but fumbled into the end zone.

Ole Miss has lost 5 straight to Bama & 13 of 15 (L/4 decided by 3 ppg). Last year UM trailed 24-3 at the half but scored 17 straight pts in the 2H, falling just short 24-20.

First meeting. Ole Miss is 125-52-2 vs current CUSA teams winning by an avg of 10 ppg. UM has won 9 straight non-conf/non-BCS games by an avg of 20 ppg.

Mississippi ended a 4 gm losing streak in this series LY as Nutt beat his former tm 23-21. UM led 23-14 with 1:45 left, but UA went 71 yds in :38 for a TD with 1:07 left.

Ole Miss is 4-22 vs Auburn since 1971. UM snapped a 4 gm losing streak to Aub with last year's 17-7 win. It was the fewest pts Auburn had scored vs UM since 1965.

Ole Miss hasn't lost to a current FCS team S'45 winning the L/10 by an avg 29 ppg. The Lumberjacks went 6-5 last year including a 30-13 loss at Arizona St.

UM is 18-43-1 all-time vs Tennessee & has lost the last 12 in this series by an avg of 18 ppg. The last meeting was a 27-10 Volunteer win in Knoxville in '05.

Mississippi ended a 6 gm losing streak to LSU with last year's 31-13 upset. The Rebels outgained LSU 409-215 & held them to 4 plays or less in 8 of their 13 drives.

Ole Miss has won 5 of the last 7 Egg Bowls. Last year the Rebels set a school record with 11 sks in their 45-0 win & had a 461-24 yd edge & a 22-8 FD edge.

2nd Year at Mississippi

Houston AT MISSISSIPPI/OVERALL

9-4 / 89-58	SU	2-1 / 7-17	Vs Top 10
5-2 / 61-21	Home	3-2 / 18-31	Vs Top 25
3-2 / 25-30	Away	1-1 / 4-10	Vs BCS Tms
1-0 / 3-7	Neutral	2-1 / 12-8	Off A Bye
5-3 / 50-45	Vs Conf	3-1 / 23-24	Off A Loss

2008 RECORD: (9-4)
RETURNING STARTERS:
OFFENSE: 8*
DEFENSE: 8

LETTERMEN:
Returning: 51 (25,23,3)
Lost: 18 (8,8,2)

2008 AVERAGE ATTENDANCE: 53,005 (#39)

SEC - WEST DIVISION



DE Marcus Tillman

STADIUM: VAUGHT-HEMINGWAY STADIUM (60,580) (#41)
PLAYING SURFACE: ARTIFICIAL (AstroPlay)

	2000	2001	2002	2003	2004	2005	2006	2007	2008	9Yr Total
Straight Up	7-5	7-4	7-6	10-3	4-7	3-8	4-8	3-9	9-4	54-54
Home	5-2	4-2	6-1	5-2	3-3	2-4	4-3	2-5	5-2	36-24
Away	2-2	3-2	0-5	4-1	1-4	1-4	0-5	1-4	3-2	15-29
Neutral	0-1	0-0	1-0	1-0	0-0	0-0	0-0	0-0	1-0	3-1
vs Conf	4-4	4-4	3-5	7-1	3-5	1-7	2-6	0-8	5-3	29-43
vs Non-Conf	3-1	3-0	4-1	3-2	1-2	2-1	2-2	3-1	4-1	25-11
ATS	4-7-1	4-6	7-6	9-4	4-7	3-7	5-4-2	6-5	9-3	51-49-3
Home Fav	2-4	1-3	3-2	4-2	1-3	0-3	0-1-2	1-0	4-2	16-20-2
Home Dog	1-0	1-0	1-1	1-0	1-1	1-1	3-0	3-2	0-0	12-5
Away Fav	1-0-1	1-2	0-0	1-2	0-1	0-1	0-0	0-1	0-1	3-8-1
Away Dog	0-2	1-1	2-3	2-0	2-2	2-2	2-3	2-2	4-0	17-15
Neutral	0-1	0-0	1-0	1-0	0-0	0-0	0-0	0-0	1-0	3-1
vs Conf	3-4-1	3-5	4-4	6-2	4-4	2-6	5-2-1	5-3	5-3	37-33-2
vs Non-Conf	1-3	1-1	3-2	3-2	0-3	1-1	0-2-1	1-2	4-0	14-16-1
Off SU Win	2-5	3-3	4-2	6-3	2-1	1-2	2-1	2-1	6-2	28-20
Off SU Loss	1-2-1	1-3	3-3	3-0	2-5	1-5	3-3-1	4-3	2-1	20-25-2



YR	BOWL/TM RANK	LINE	OPPONENT	SCORE	LAST 5 BOWL GAMES
99	Independence	+4	Oklahoma	27-25	Mississippi's All-Time Bowl Record 20-12
00	Music City	-3'	West Virginia	38-49	
02	Independence	+7	Nebraska	27-23	
03	Cotton - #16	-2'	Oklahoma St - #21	31-28	
08	Cotton - #20	+4	Texas Tech - #8	47-34	

2008 STATISTICAL LEADERS

RUSHING	ATT	GAIN	LOST	NET	TD	AVG	PLAYER	TKL	SKS	TFL	PBU	INT
Dexter McCluster	109	697	42	655	6	6.0	Kendrick Lewis	85	1	1.5	6	4
Cordera Eason	140	660	13	647	3	4.6	Jamarca Sanford	82	0.5	3.5	0	0
Brandon Bolden	98	565	23	542	5	5.5	Tony Fein	52	0	5	0	0
Enrique Davis	64	258	14	244	3	3.8	Ashlee Palmer	50	1	4	0	1
Derrick Davis	21	98	0	98	0	4.7	Peria Jerry	49	7	11	1	0
Mike Wallace	10	97	5	92	0	9.2	Jonathan Cornell	45	3	2.5	0	0
Jevan Snead	57	187	127	60	3	1.1	Cassius Vaughn	43	1	2.5	4	3
PASSING	ATT	COMP	PCT	YDS	TD	INT	PLAYER	ATT	YDS	TD	INT	
Jevan Snead	327	184	56.3	2762	26	13	Kentrell Lockett	36	2	9.5	0	0
Billy Tapp	5	3	60.0	34	0	0	Marshay Green	32	0.5	1.5	6	2
Dexter McCluster	5	0	0.0	0	0	0	Patrick Trahan	29	2	2.5	0	0
RECEIVING	REC	YDS	AVG	TD	LONG		PLAYER	REC	YDS	AVG	TD	LONG
Mike Wallace	39	784	20.1	7	83		Johnny Brown	28	0	0	0	0
Shay Hodge	44	725	16.5	8	86		Marcus Tillman	26	1	5	0	0
Dexter McCluster	44	625	14.2	1	56		Ted Laurent	24	1	6	0	0
Lionel Breaux	12	178	14.8	0	39		Chris Bowers	23	1.5	2	0	0
Brandon Bolden	10	107	10.7	1	33		Dustin Mouzon	23	0.5	2.5	1	1
Markeith Summers	5	94	18.8	0	33		Marcus Temple	22	0	0	1	0
Gerald Harris	7	84	12.0	4	22		Lawson Scott	21	2	0.5	1	0
Cordera Eason	10	82	8.2	2	18		Jeremy McGee	20	0	1	5	0
Jason Cook	7	47	6.7	1	16		Greg Hardy	18	8.5	1	1	1
PUNTING	NO	YDS	AVG	FC	NET	BLK	INT	NO	YDS	AVG	TD	
Rob Park	54	2099	38.9	20	36.5	0	17	35	381	10.9	1	0
KICKING	XP	1-29	30-39	40-49	50+	TOTAL	LONG	NO	YDS	AVG	TD	
Joshua Shene	52-52	6-6	9-10	2-4	0-1	17-21	47	35	861	24.6	1	0

OFFENSE - LAST 7 YEARS - DEFENSE

RET	OFF	TOTAL	OFF	OFF	PASS	OFF	DEF	DEF	DEF	DEF	DEF	DEF	DEF	DEF	DEF	DEF	DEF	DEF	DEF	DEF
STS	PTS	OFF	RUSH	YPC	%	YPP	VS	VS	VS	VS	VS	VS	VS	VS	VS	VS	VS	VS	VS	VS
7	32.1	408	186	4.7	221	55.9	12.7	20	-2	2008	8	19.0	307	86	2.7	222	58.8	16.2	38	
9*	20.1	345	132	4.2	214	51.0	17.2	28	-10	2007	6	28.5	423	199	4.7	224	63.1	14.9	21	
5	15.7	261	125	3.6	136	47.9	16.7	29	-3	2006	5	22.9	354	159	4.2	195	59.6	15.4	14	
5*	13.5	281	73	2.4	208	53.1	20.9	26	-5	2005	7	22.3	332	153	3.7	179	56.6	14.9	19	
6	19.5	351	159	4.0	192	50.9	18.0	23	-3	2004	4	25.3	391	185	4.5	206	47.3	15.4	22	
8*	34.0	433	147	3.9	286	62.8	12.7	19	+6	2003	8	21.9	378	102	3.2	276	56.2	17.3	28	
7*	27.0	358	94	3.0	264	58.2	13.3	17	+5	2002	7	25.5	347	160	4.0	187	51.9	13.6	29	

UM 2008 ATT	OPPONENT	FD	Rush-YDS	AVG	CO-ATT	YDS	VS	SKS	TURN	DEFENSE	FD	Rush-YDS	AVG	CO-ATT	YDS	VS	SKS	TURN
56,127	Memphis	19	36-216	6.0	11-23	222	1	28	40-188	4.7	24-44	265	1	+2				
31,986	at Wake Forest	21	29-107	3.7	20-33	253	0	22	31-81	2.6	32-43	267	4	-2				
52,780	Samford	23	37-196	5.3	14-25	228	0	14	41-74	1.8	16-25	124	1	-2				
51,281	Vanderbilt	16	40-201	5.0	12-25	184	1	11	41-131	3.2	9-12	71	1	-4				
90,106	at Florida	10	38-140	3.7	9-21	185	2	24	35-124	3.5	24-38	319	3	+2				
54,628	South Carolina	21	33-118	3.6	21-32	243	2	20	35-78	2.2	22-32	327	3	-2				
92,138	at Alabama	14	34-158	4.6	17-33	201	2	15	34-107	3.1	16-25	219	2	-1				
74,168	at Arkansas	21	45-160	3.6	14-27	209	2	17	25-104	4.2	20-38	282	3	0				
57,324	Auburn	21	41-233	5.7	15-30	140	3	17	25-75	3.0	27-43	319	0	+3				
43,665	ULM	21	53-350	6.6	6-12	170	0	7	34-72	2.1	7-18	59	3	+2				
92,649	at LSU	21	45-102	2.3	17-26	307	2	15	29-37	1.3	14-32	178	4	+1				
55,231	Mississippi St	22	44-220	5.0	16-24	241	1	8	27-(-64)	-2.4	10-29	88	11	0				
88,175	† Texas Tech	26	45-223	5.0	18-29	292	4	24	14-105	7.5	36-58	364	2	-1				
TOTALS			256	520-2424	4.7	190-340	2875	20	222	411-1112	2.7	257-437	2882	38	-2			
AVERAGES			19.7	40-186	4.7	15-26	221	5.9%	17.1	32-86	2.7	20-34	222	8.7%</				