

NOTRE DAME FIGHTING IRISH

POSITION OUTLOOK FOR 2009

QUARTERBACKS - In Brady Quinn's first year as a starting QB he threw for 1,831 (47%) with a 9-15 ratio. In his senior season, with a veteran offense, he threw for 3,426 (61.9%) with a 37-7 ratio. Quinn's backup, Evan Sharpley (PS#13), played in 8 (2 passes) in '06 and he battled true frosh Jimmy Clausen (PS#5) in 2007. Clausen underwent elbow surgery in June and was not 100% in Aug as it affected his conditioning and arm strength. After a disastrous opener which caused starter Demetrius Jones (PS#6) to transfer, Clausen became just the 8th frosh to start since 1951 when he started in Wk 2. Clausen became physically worn down and was benched for a few games. Sharpley led 2 starts and threw for 736 (55%) with a 5-3 ratio. Clausen threw for 1,254 (56.3%) with a 7-6 ratio (6-1 ratio L/3). Clausen was able to condition last year and added 18 lbs and figured to be a much improved QB. Clausen threw for 3,172 (61%) with 25 TD's but after his streak of 132 passes without an int ended vs N Car (3Q), he threw 11 int in the next 24Q's and finished with 17. Sharpley played in just 3 (5 att) and has opted to leave the team to play baseball. Backing up Clausen will be Dayne Crist (PS#5), Nate Montana (Joe's son, PS#245), Brian Castello (6'2" 191 Jr) and Matt Mulvey (6'3" 195 rFr). Clausen had a record setting bowl (22-26 401, 5 TD) which should give him the added confidence to show continued improvement as a junior.

RUNNING BACKS - In 2006 Darius Walker led with 1,267 (5.0) while true frosh James Aldridge (PS#2) rushed for 142 (3.8) while missing 5 games. They had to replace Walker in '07 and their top 3 RB's were soph Aldridge and 2 true frosh in Armando Allen (PS#13) and Robert Hughes (PS#9). Aldridge started 5 and led with 463 (3.8) and Allen was #2 with 348 (4.0). Hughes' powerful running helped on a muddy field vs Duke (110) he then added 136 vs Stanford and finished with 294 (5.5). All 3 ret'd last year. Allen, who is one of the team's fastest (4.34), led with 585 (4.4) and also had 50 rec (7.1). He had 134 (7.9) vs Purdue and since they split carries, that was the only individual 100 yard effort by the RB's. Hughes' ypc dropped to 3.4 and he was #2 with 382. Aldridge rushed for 357 (3.9) and he was tried at FB in spring '09. True frosh Jonas Gray (PS#5) had 61 vs Wash but had a late fumble at the GL vs Navy, which kept the Mids in the game. He did not play in the last 2 reg season games but had 5 att in the bowl. Once again the top 3 return with the only loss being FB Asaph Schwapp (2 st). Also in the mix are FB Mike Narvaez (5'11" 231 Sr) and this year's true frosh including Cierre Wood (PS#4). I will call for the Irish to have their best RB production in at least 5 years.

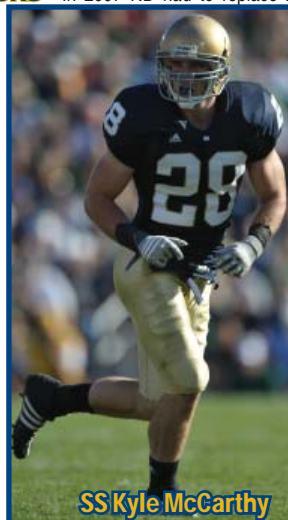
RECEIVERS - The Irish's career reception leader was Tom Gatewood (1969-'71) and he was also the team's last 1,000 yard receiver until Weis arrived in '05. In his first 2 years, Weis produced three 1,000 yard rec. In '07 the unit had to replace 2 WR's (comb 1,924 rec yd '06) but did return TE John Carlson who had 634 (13.5) while the top returning WR was David Grimes (336, 12.9). Carlson led with just 372 (9.3) and soph Robby Parris (PS#31) added 361 (12.4). Grimes saw his numbers drop to 224 (8.3). True frosh Golden Tate (PS#27) got his first start vs UCLA and had 131 (21.8). He had moved from RB and there was a learning curve for him at WR with most of his plays being the go route. Last year they had to replace Carlson and then projected starting TE Mike Ragone (PS#2) tore his ACL and his backup, Will Yeatman (PS#33), played in just 3 (susp). True frosh Kyle Rudolph (PS#2) was basically the team's only TE until Joseph Fauria burned his RS in game 7. Tate was much more comfortable at WR and he led with 1,080 (18.6). Michael Floyd (PS#2) set 7 ND freshman reception records as a true despite missing most of the last 3 regular season games due to a knee injury. He finished with 719 (15.0). Rudolph had 340 (11.7). This year the only loss is Grimes (7 st, 321, 9.2). Everyone else is back and they add in a PS#10 and PS#13 rFr. Not listed below is TE Bobby Burger (PS#242 Jr). This is one of the best receiving corps in the country.

OFFENSIVE LINE - The Irish OL is made up almost exclusively of VHT's but despite fielding experienced fronts from '02-'06, the best ypg rush was 157 (4.0) in 2003. In the other 4 years they avg just 3.4, 3.3, 3.6 and 3.9 ypc. In '07 they had to replace 3 starters (#3, #7 DC's) and two backups. They had three 1st time starters and the inexperienced OL struggled. They set a school record (38 in '02) by allowing an NCAA worst 58 sacks (14.9%) and only avg 75 ypg (2.1) rush. That total was 50 ypg less than any season in the last 60 years. Last year they had to replace one starter and then lost LT Paul Duncan (12 st '07) to injury. As you would expect, the numbers improved dramatically with just 22 sacks allowed (4.9%) and 110 ypg (3.3). This year they must replace LT Michael Turkovich (13 st, 2Y str) and OG Thomas Bemenderfer (13 gm) but have 8 of the top 10 back, plus Duncan returns to fill the open spot. This unit has gone from a weakness in '07 to a strength in 2009.

DEFENSIVE LINE - In 2007 the Irish had to replace 3 of their 4 starters including #2 and #5DC's and switched to a 3-4. The less experienced front allowed 195 ypg rush (4.3) which was the most here since 1991 while the D had just 19 sacks. DE Trevor Laws led ND in tackles with 112, the most since Steve Niehaus (113, 1975). Pat Kuntz led all FBS DL's in pbu. Last year they had to replace Laws (#2DC) and 2 others (comb 5 st). They moved to more of a 4-3 with a LB playing standup DE and the Irish improved to 134 ypg (4.1). They had only 18 sks in the reg sn until they had 8 vs the NCAA's most porous OL (Hawaii) in the bowl. This year they lose Kuntz (13 st, 42 tkl, 1 int, 3.5 sk) and DE Justin Brown (9 st, 24 tkl). While there is one more position to fill, Kerry Neal and John Ryan combined for 14 starts at the LB/DE spot so they do have 2 starters back and add in 4 VHT rFr. I look for continued improvement from the Irish D-line.

LINEBACKERS - Last year the Irish had to replace their #2 tackler and a backup (4 st). This year they lose Maurice Crum (11 st, #3 tkl'r, 4Y str) and Steve Quinn (2 st, 14 tkl, 3 sk). Harrison Smith (#4 tkl'r) moves to FS so the top returnee is Brian Smith (5th tkl'r). Surprisingly true frosh PS#1 Steve Flier played in 11 games LY but had just 1 tackle. I expect a bigger impact from this year's PS#1 LB Manti Te'o who should start immediately. They add in 3 other VHT true frosh and not listed in the 2 deep below are Sean Oxley (6'2" 220 rFr), Tom Burke (5'10" 242 Sr) and Steve Botsford (6'2" 225 Jr). Despite losing 2 starters, they actually have a little more experience and speed.

DEFENSIVE BACKS - In 2007 ND had to replace 2 starters (#6 & #7 DC's) but moved up to #26 in my pass D rankings allowing just 162 ypg (52.6%), their lowest total since 1996. Last year they had to replace one starter (#3DC) and one backup (4 st). They then lost CB Darrin Walls (11 st '07, RS) and CB Terrill Lambert started just 9. The Irish slipped a little to #32 but Kyle McCarthy set a school record in tackles by a DB with 110. This year they lose FS David Bruton (13 st, 97 tkl, 4 int, #4DC DEN), CB's Lambert (9 st, 33 tkl) and John Leonis (1 tkl). Not only do six of the top 8 return but they get Walls back and add in Harrison



SS Kyle McCarthy

Smith (PS#22) who had 9 starts at LB last year. Five players who have been full-time starters return and should be one of the top secondaries in the country.

SPECIAL TEAMS - Charlie Weis inherited a unit that finished #59 in my ST rankings in '04 and they moved up to #39 in '05. They dropped to #64 and #93 in '06 & '07. Weis admitted his mistake of splitting the ST coaching duties among 9 ass'ts noting that "it did not work." Last year they had to replace their P and top PR and almost replaced their K. Brandon Walker, who has a good leg, hit just 6 of 12 FG's in '07, and just 1 of his first 7 LY. Weis brought in intramural player David Ruffer who was impressive in practice but he missed an xp in his only action. Walker hit 13 of his final 17 FG's (long 48) with 2 misses from 49+. New P Eric Maust had 21 punts (42.1) in '07 and avg 41.1 in '08 (35.1 net). Ryan Burkhardt had only 1 TB on 62 KO but ND led the FBS in KR defense. The return game, despite some explosive players, was avg but they were +2 in the TD/Blk and finished #30. This year everyone returns including star gunner Mike Anello (23 tkl on ST).

COACHES - Charlie Weis has 3 Super Bowl rings as the NE Patriots OC and is a 1978 ND grad. He took over as head man in 2005 and guided the team to a pair of BCS bowls in his first two years. Weis has come under a lot of fire the last two seasons (10-15) barely holding on to his job after '08. Last year's OC Mike Haywood moved on to be the HC at Miami (OH). Weis will be the OC which he did after resuming the play calling duties late last year, he also handled them his first 3 years. Co-DC Corwin Brown will enter his 3rd year but last year Jon Tenuta was added as a Co-DC and will call the def signals this year. He has been the DC at GTech ('02-'07), NC ('01) and Ohio St ('00).

PHIL'S FORECAST

After a 5-7 season in 2003, I called the Irish the 7th most improved team in the country and they became yet another squad that got to a bowl after a losing season. When Ty Willingham took over in 2002, he converted the team from an option-style rush attack to a pro-style pass attack and that is usually a 3-to-4 year process. In 2005 Charlie Weis stepped into a great situation as it was the 4th year after the change of offense and the team possessed a pro-style QB, pro-style WR's and an OL that was used to pass blocking. He also inherited 10 ret starters on offense and they rolled up 36.7 ppg. They upended #3 Mich on the road, which was the highest ranked team that ND had beaten since 1993 and later earned a BCS bowl berth but were outgained by Ohio St 617-348 in their 8th straight bowl loss. Weis was named the FWAAs Coach of the Year. In 2006 they had 16 ret starters and the Irish opened at #2 in the AP poll. They became the first team since USA Today took over the coaches poll ('91) to start one year unranked and to be ranked in the Top 3 the next year. The Irish rolled to a 10-1 record (#6) but lost to #3 USC by 20 then were thrashed in the bowl by 27 vs LSU. They also had a 26 pt home loss to Mich. 2007 looked like a rebuilding year but Weis refused to use those words. The Irish went from a veteran unit to one with just 9 returning starters and a true frosh QB. It ended up being a record breaking year for all of the wrong reasons. They were basically non-competitive as they opened the season 0-5 with all of the losses coming by double digits. They finished 3-9 but did, however, win their last 2 gms for the 1st time since '92. Nine true frosh started at some point. It was their 4th losing season since 1999 and 13th in school history. Last year the Irish were my #1 Most Improved Team and as you would expect, went from a losing season to a bowl. They also could have had a much better record than 7-6. Three times during the year the Irish blew a double digit lead. They led UNC 17-6 in the 2Q but imploded with 4 TO's in the 2H. They were in control vs Pitt with a 240-71 yd edge and led 17-3 at half but lost in 4OT. The most unforgivable loss came vs Syr where they led 23-10 in the 4Q but let the worst team in the Big East come back. They did not get their first FD until the end of the 3Q vs USC in the 38-3 rout. ND ended the season on a high note, picking up their first bowl win since the 1993 Cotton Bowl. ND's 15 losses the last 2 years are the most in school history and Weis' overall record of 29-21 is actually a weaker percentage than Ty Willingham's and Bob Davie's when they were fired. This year ND has 15 ret starters including 3rd year starting QB Jimmy Clausen. The Irish did have 38 starts lost to injury which is the 15th most in the FBS. This year the Irish make my Surprise Teams list as a Darkhorse Nat'l Title contender.

OFFENSE

JERSEY #
IN BLUE

2009 PROJECTED STARTING LINEUP

JERSEY #
IN BLUE

DEFENSE

QB 7 JIMMY CLAUSEN JR. 6-3 217 PS#5. 9 st, 1254 (56%), 7-6 ratio. 13 st, 3172 (61%), 25-17 ratio. **10** Dayne Crist (6'4" 233 rFr) PS#5. **16** Nate Montana (6'4" 200 rFr).
HB 5 ARMANDO ALLEN JR. 5-10 195 PS#13.933 (4.2) **2Y**33 Robert Hughes (5'11" 237 Jr) PS#9. 676 (4.1) 2Y. James Aldridge (6'0" 225 Sr) PS#2. 362 (3.9) 3Y. Jonas Gray (5'10" 230 So) PS#5.
WR 18 DUVAL KAMARA JR. 6-5 219 PS#8. 5 st, 357 (11.2) true. 10 st, 206 (10.3) LY.
RB 23 GOLDEN TATE JR. 6-5 219 PS#8. 5 st, 357 (11.2) true. 10 st, 206 (10.3) LY.
WR 18 DUVAL KAMARA JR. 6-5 219 PS#8. 5 st, 357 (11.2) true. 10 st, 206 (10.3) LY.
WR 3 MICHAEL FLOYD SO. 6-3 215 PS#2. 10 st, 719 (15.0) true. **81** John Goodman (6'3" 197 rFr) PS#10. Deion Walker (6'2" 188 rFr) PS#13. Barry Gallup (5'11" 200 Jr) PS#16.
WR 23 GOLDEN TATE JR. 6-5 219 PS#8. 5 st, 357 (11.2) true. 10 st, 206 (10.3) LY.
TE 9 KYLE RUDOLPH SO. 6-2 258 PS#2. 13 st, 340 (11.7). **1stTm Frosh AA** true.
83 Mike Ragone (6'5" 251 So) PS#2. 1 rec true. ACL & RS LY. Joseph Fauria (6'7" 245 So) PS#10.
C 51 DAN WENGER JR. 6-4 302 PS#24. 5 st rFr. 154:35 min plyd. 13 st, 354:12 LY. Braxton Cave (6'3" 310 Fr) PS#39. 1 gm. 4:33. **LS** Jordan Cowart is PS#326. Bill Flavin (6'3" 252 Jr).
RG 59 CHRIS STEWART JR. 6-5 337 PS#14. 6 gm, 46:44 rFr. 10 st (inj). 219:00 LY.
78 Trevor Robinson (6'5" 301 So) PS#13. 3 st, 11 gm, 174:44 true. Mike Golic Jr (6'3" 280 rFr) PS#38.
LG 55 ERIC OLSEN SR. 6-4 303 PS#28. 8 gm, 20:45 true. 6 st, 171:45 '07. 13 st, 328:12 LY. **76** Andrew Nuss (6'5" 304 So) PS#58. 2 gm, 9:17 rFr. Mike Hernandez (6'2" 275 rFr).
RT 74 SAM YOUNG SR. 6-8 330 PS#1. 13 st, 292:17 true. 12 st, 310:08 '07. 13 st, 353:20 LY. **14** Lane Clelland (6'5" 281 Fr) PS#19. Taylor Dever (6'5" 308 So) PS#149. 12 gm, 12:52 LY.
LT 72 PAUL DUNCAN SR. 6-7 308 PS#53. 18 gm, 107:54 2Y. 12 st, 301:47 '07. RS inj LY. **77** Matt Romine (6'5" 292 So) PS#18. 5 gm, 17:03 rFr. Dennis Mahoney (6'6" 290 rFr).
K 14 BRANDON WALKER JR. 6-3 202 PS#5. 6-12 FG, L48, 13 KO (56.4) true. 14-24 FG, L48 LY. Nick Tausch PS#6. **48** David Ruffer (6'1" 180 So). **36** Joe Bizjak (6'2" 165 Sr).

DE 89 Kapron Lewis-Moore rFr. 6-4 265 PS#40. **53** Morrice Richardson (6'2" 255 Sr) PS#20. 9 gm true. 7 tkl '07. 11 tkl LY. **98** Sean Cwynar (6'4" 282 rFr) PS#13. Martin Quintana (6'1" 250 Sr).
NG 95 IAN WILLIAMS JR. 6-2 310 PS#45. 2 st, 45 tkl, 1.5 true. 7 st, 40 tkl, 2 tfl LY.
79 Hafis Williams (6'1" 295 rFr) PS#33. Big spg. **99** Brandon Newman (6'1" 310 Fr) PS#46.
DT 9 Ethan Johnson So. 6-4 275 PS#11. 4 st, 18 tkl, 5 tfl true. **91** Emeka Nwankwo (6'4" 295 So) PS#27. 2 tkl, 7 gm rFr. **93** Paddy Mullen (6'3" 300 Jr) PS#12. 1 tkl, 3 gm 2Y.
DE 56 KERRY NEAL JR. 6-2 246 PS#38. 5 st, 20 tkl true. 9 st, 25 tkl, 4 tfl LY. **90** John Ryan (6'5" 264 Sr) PS#67. 10 st, 43 tkl 2Y. 5 st, 7 tkl LY. **97** Kallen Wade (6'5" 255 Jr) PS#3. 2 gm 2Y.
LB NA Manti Te'o Fr. 6-2 225 PS#1. Expected to start immediately. **43** David Fleming (6'1" 236 So) PS#26. 3 st, 24 tkl true. **41** Scott Smith (6'3" 235 Sr) PS#69. 33 tkl 3Y.
MLB 56 BRIAN SMITH JR. 6-3 245 PS#34. 3 st, 25 tkl true. 9 st, 11 gm (inj) 54 tkl, 4 tfl LY. **49** Toryan Smith (6'1" 244 Sr) PS#22. 4 st, 41 tkl 3Y. Carlo Calabrese is PS#27.
WLB 46 Steve Filer So. 6-3 236 PS#1. 11 gm, 1 tkl as true. 4.5 speed. **36** David Poslusny (6'0" 220 rFr) PS#82. 4.62 speed. **54** Anthony McDonald (6'1" 225 rFr) PS#14.
CB 2 Darrin Walls Jr. 6-0 190 PS#5. 2 st, 4 tkl, 8 gm true. 11 st, 32 tkl '07. RS LY.
26 Jamaris Slaughter (6'0" 182 Fr) PS#35. Gary Gray (5'11" 188 So) PS#12. 9 gm, 15 tkl Fr. spg.
CB 8 RAESHON McNEIL SR. 6-0 190 PS#16. 1 st, 13 tkl, 3 pbu 2Y. 13 st, 41 tkl, 13 pd LY.
12 Robert Blanton (6'1" 180 So) PS#22. 3 st, 33 tkl, 5 pd true. Mike Anello (5'10" 170 Sr) 29 tkl 2Y.
RS 28 KYLE MCCARTHY SR. 6-0 203 1 st, 29 tkl 2Y. 13 st, 110 tkl LY. **31** Sergio Brown (6'2" 205 Sr) PS#11. 11 tkl 2Y. 6 st, 28 tkl, 6 pd LY. **6** Ray Herring (5'10" 198 Sr) PS#61. 1 st, 43 tkl 4Y.
FS 22 HARRISON SMITH SO. 6-2 212 PS#22. 9 st, 57 tkl, 8.5 tfl, 7 pbu Fr. **15** Dan McCarthy (6'2" 200 rFr) PS#6. **24** Leonard Gordon (5'11" 187 Jr) PS#79. 7 gm rFr. 13 gm, 5 tkl LY.
P 43 ERIC MAUST JR. 6-2 177 PS#37. 21 punts (42.1) rFr. 54 punts (41.1), 35.1 net LY. Ben Turk is PS#10. **39** Ryan Burkhardt (5'11" 190 Sr) PS#13. 8 KO true. DNP '07. 62 KO (61.1) LY.

TOP NETCOMERS FOR 2009

LB Manti Te'o 6-2 225 PS#1
OL Chris Watt 6-3 280 PS#6
RB Cierre Wood 6-0 192 PS#4
WR Shaquille Evans 6-1 203 PS#9
DL Tyler Stockton 6-1 290 PS#17
LB Zeke Motta 6-2 215 PS#17
OL Alex Bullard 6-3 275 PS#28
OL Zach Martin 6-5 270 PS#32
LB Carlo Calabrese 6-2 225 PS#27
DB EJ Banks 5-11 181 PS#52
LB Dan Fox 6-4 219 PS#35
TE Jake Golic 6-4 220 PS#21
TE Tyler Elier 6-6 220 PS#24
WR Roby Toms 5-9 175 PS#109
K Nick Tausch 6-1 180 PS#6
K Ben Turk 6-0 190 PS#10
OL Tom Freeman 6-3 275 PS#183
LS Jordan Cowart 6-2 255 PS#326OL

NOTRE DAME FIGHTING IRISH

South Bend, Indiana
Weather (574) 651-2828

CHARLIE WEIS (Career 29-21)
5th Year at Notre Dame Weis' Bowl Record: 1-2

Phil's Homefield Edge-4 2009 Schedule Difficulty-#36		TURF	LINE	Final Score	W	L
Date	Opponent			ND Opp		
Sep. 5	Nevada	G				
Sep. 12	at Michigan	A				
Sep. 19	Michigan St	G				
Sep. 26	at Purdue	G				
Oct. 3	Washington	G				
Oct. 10						
Oct. 17	USC	G				
Oct. 24	Boston College	G				
Oct. 31	† Wash St (San Antonio)	A				
Nov. 7	Navy	G				
Nov. 14	at Pittsburgh	G				
Nov. 21	Connecticut	G				
Nov. 28	at Stanford	G				
Dec. 5						

CAREER PASSING LEADERS
1. Brady Quinn 11,762 '03-'06 2. Ron Powlus 7,602 '94-'97 3. Steve Beuerlein 6,527 '83-'86

CAREER RUSHING LEADERS
1. Auty Denson 4,318 '95-'98 2. Allen Pinkett 4,131 '82-'85 3. Vagas Ferguson 3,472 '76-'79

CAREER RECEIVING LEADERS
1. Jeff Samardzija 2,593 '03-'06 2. Derrick Mayes 2,512 '92-'95 3. Tim Brown 2,493 '84-'87

First meeting. Last year the Irish faced San Diego St which was the first time since 1955 that their home opener was against a team that was not a current BCS team.

Five upsets in the last 7 games. The Irish are 3-9 since 1997 in road openers. LY ND scored a series record 21 pts in the 1Q & Michigan finished with 6 TO's.

The home team is 1-7 with ND's 23-7 loss LY. ND is 3-9 vs MSU incl B2B losses. The Irish have faced MSU the week after Michigan for 8 straight years (including '09).

The visitor is 3-10 & the last 6 games have been decided by an avg of 17 ppg with none closer than 13 pts. Last year's game was tied at 14 before 24 2H pts (295 2H yds).

ND is a perfect 7-0 vs Wash winning by an avg of 27 ppg with the L/4 all by 19+ pts. Dominating LY as UW didn't cross midfield until 5:50 left & had 51 yds to start 4Q.

Notre Dame has lost 7 straight & the last 2 have been by a combined 76-3 pts. When ND hosted USC in '07 the 38-0 loss was a series worst for the Irish (80 gms).

Teams have split 18 all-time meetings but the Irish have dropped 6 straight. ND outgained BC 292-246 in LY's shutout but Clausen threw 4 int's including a pick 6.

ND won 29-26 in OT in their only meeting vs WSU ('03 opener). The Irish are 5-0 in regular season neutral site gms. ND has won 8 straight non-USC Pac-10 games.

ND is of course 44-1 after dropping their 3OT game to Navy in last game here. Last year ND led 27-7 with 1:33 left & Navy got 2 inside K's for the 27-21 final.

ND is 12-3 vs Pitt but 2-2 since '03 as the visitor has won 4 straight. LY ND had a 14pt HT lead & neither tm could score a TD in 4 OT's (ND missed a FG from 38 yds).

First meeting. Notre Dame is 7-2 in home finales but lost last year to Big East member Syracuse as a 19' pt fav. Coming into '09, ND is 56-22-1 vs current Big East tms.

The Irish have beaten the Cardinal 7 straight times including twice in the reg season finale. Last yr Clausen had career highs in passing yds (347) & completions (29).

Weis' records AT NOTRE DAME

29-21 Straight Up 1-6 Vs Top 10
15-11 Home 4-10 Vs Top 25
12-8 Away 21-19 Vs BCS Teams
2-2 Neutral 4-4 Off A Bye
4-1 Vs Independent 9-10 Off A Loss

2008 RECORD: RETURNING STARTERS:
(7-6) OFFENSE: 9*
DEFENSE: 6
LETTERMEN:

Returning: 44 (21,20,3)
Lost: 20 (8,11,1)

2008 AVERAGE ATTENDANCE: 80,795 (#16)

INDEPENDENT



STADIUM: NOTRE DAME STADIUM (80,795) (#18)
PLAYING SURFACE: GRASS

	2000	2001	2002	2003	2004	2005	2006	2007	2008	9Yr Total
Straight Up	9-3	5-6	10-3	5-7	6-6	9-3	10-3	3-9	7-6	64-46
Home	5-1	4-2	5-1	3-3	3-3	4-2	6-1	1-6	4-2	35-21
Away	3-1	1-4	3-1	2-4	2-2	5-0	3-1	2-3	2-4	23-20
Neutral	1-1	0-0	2-1	0-0	1-1	0-1	1-1	0-0	1-0	6-5
vs Independent	1-0	1-0	1-0	1-0	1-0	1-0	2-0	0-1	1-0	9-1
vs Non-Indep	8-3	4-6	9-3	4-7	5-6	8-3	8-3	3-8	6-6	55-45
ATS	8-4	4-7	9-4	4-8	6-6	7-5	4-8-1	5-7	7-6	54-55-1
Home Fav	2-2	1-3	4-1	1-3	2-2	1-0	2-3	1-2	2-3	17-24
Home Dog	1-1	0-0	1-0	0-2	1-1	1-1	0-0	1-3	1-0	8-7
Away Favorite	3-0	0-0	0-0	1-1	1-1	1-1	1-1-1	0-0	2-0	9-4-1
Away Dog	0-1	2-3	3-1	2-2	1-1	3-0	0-1	3-2	1-3	15-14
Neutral	1-1	0-0	1-2	0-0	1-1	0-1	1-1	0-0	1-0	5-6
vs Independent	1-0	0-1	0-1	0-1	1-0	0-1	2-0	0-1	1-0	5-5
vs Non-Indep	7-4	4-6	9-3	4-7	5-6	7-4	4-8-1	5-6	6-6	49-50-1
Off SU Win	6-3	2-2	8-2	2-3	3-3	4-5	4-6	2-0	3-3	34-27
Off SU Loss	1-1	2-4	0-2	2-4	3-2	2-0	0-1-1	3-6	4-2	17-22-1



YR	BOWL/TM RANK	LINE	OPPONENT	SCORE	LAST 5 BOWL GAMES
02	Gator - #11	+1	NC State - #17	6-28	Notre Dame's All-Time Bowl Record 14-15
04	Insight	+4	Oregon St	21-38	
05	Fiesta - #5	+4	Ohio St - #4	20-34	
06	Sugar - #11	+8	LSU - #4	14-41	
08	Hawaii	-2	Hawaii	49-21	

2008 STATISTICAL LEADERS

RUSHING	ATT	GAIN	LOST	NET	TD	AVG	PLAYER	TKL	SKS	TFL	PBU	INT
Armando Allen	134	621	36	585	3	4.4	Kyle McCarthy	110	0	3.5	1	2
Robert Hughes	112	412	30	382	4	3.4	David Bruton	97	0	1.5	6	4
James Aldridge	91	383	26	357	3	3.9	Maurice Crum	65	3	2.5	1	0
Jonas Gray	21	104	14	90	0	4.3	Harrison Smith	57	3.5	5	7	0
Harrison Smith	2	58	0	58	0	29.0	Brian Smith	54	2	2	2	0
Golden Tate	5	50	13	37	1	7.4	Pat Kuntz	42	3.5	4.5	1	1
Evan Sharpley	4	3	2	1	0	0.2	Raeshon McNeil	41	0	0	11	2
Jimmy Clausen	54	116	189	-73	0	-1.4	Ian Williams	40	0	2	1	0
PASSING	ATT	COMP	PCT	YDS	TD	INT	PLAYER	SKS	TFL	PBU	INT	
Jimmy Clausen	440	268	60.9	3172	25	17	Robert Blanton	33	0	3	3	2
Evan Sharpley	3	60.0	18	0	0	0	Terrail Lambert	33	0	0	4	0
RECEIVING	REC	YDS	AVG	TD	LONG	PLAYER	SKS	TFL	PBU	INT		
Golden Tate	58	1080	18.6	10	69	Sergio Brown	28	1	6	0		
Michael Floyd	48	719	15.0	7	51	Darius Fleming	24	2.5	0	0		
Armando Allen	50	355	7.1	2	41	Mike Anello	23	0	1	0		
Kyle Rudolph	29	340	11.7	2	29	Ethan Johnson	18	3.5	1.5	2		
David Grimes	35	321	9.2	3	31	Toryan Smith	18	0	0	1		
Duval Kamara	20	206	10.3	1	28	Ray Herring	17	0.5	0	0		
Robert Hughes	14	93	6.6	0	15	Gary Gray	15	0	2	2		
Robby Parris	9	50	5.6	0	12	Steve Quinn	14	3	0	0		
Asaph Schwapp	2	13	6.5	0	10	PUNT RETURNS	NO YDS	AVG	TD			
PUNTING	NO	YDS	AVG	FC	NET	BLK	In20	PLAYER	NO	YDS	AVG	TD
Eric Maust	54	2218	41.1	10	35.1	2	16	Golden Tate	14	116	8.3	0
KICKING	XP	1-29	30-39	40-49	50+	TOTAL	LONG	PLAYER	NO	YDS	AVG	TD
Brandon Walker	39-39	5-6	3-5	6-11	0-2	14-24	48	Armando Allen	21	543	25.9	0
								Golden Tate	26	521	20.0	1

OFFENSE - LAST 7 YEARS - DEFENSE

RET	OFF	TOTAL	OFF	OFF	PASS	OFF	DEF	DEF	DEF	DEF	SKS	TOTAL
STS	PTS	OFF	RUSH	YPC	PASS	YPP	RETS	PTS	TOTAL	DEF	PASS	YPP
8*	24.7	355	110	3.3	245	60.6	14.4	22	-3	2008	6	22.2
4	16.4	242	75	2.1	167	55.8	14.8	58	0	2007	5	28.8
7*	31.0	390	126	3.9	264	61.6	12.6	31	+5	2006	9	23.8
10*	36.7	477	147	3.6	330	64.8	13.0	21	+10	2005	3	24.5
8*	24.1	346	127	3.3	218	53.9	14.3	25	+5	2004	6	24.1
5*	20.3	336	157	4.0	179	47.4	16.6	24	+2	2003	8	26.3
6*	22.3	314	139	3.4	174	50.4	14.1	37	+5	2002	7	16.7

ND 2008 ATT	OPPONENT	OFFENSE					2008 STATS BY GAME					DEFENSE				
		FD	Rush-YDS	AVG	CO-ATT	YDS	VS	FD	Rush-YDS	AVG	CO-ATT	YDS	SKS	BY	TURN	
80,795	San Diego St	20	34-105	3.1	21-34	237	0	19	15-71	4.7	29-59	274	1	-2		
80,795	Michigan	14	34-113	3.3	10-21	147	0	21	42-159	3.8	19-28	229	0	+4		
76,366	at Michigan St	18	22-16	0.7	24-41	242	3	16	43-203	4.7	12-26	143	0	-2		
80,795	Purdue	23	40-201	5.0	20-35	275	1	23	17-103	6.1	29-55	359	0	+1		
80,795	Stanford	20	27-83	3.1	29-40	347	1	20	37-161	4.4	18-28	182	5	+4		
60,500	at N Carolina	27	30-89	3.0	31-48	383	4	21	32-121	3.8	18-32	201	1	-5		
70,437	at Washington	25	49-252	5.1	15-28	207	2	9	23-26	1.1	11-25	98	4	-1		
80,795	Pittsburgh	20	39-115	2.9	23-44	271	1	17	47-178	3.8	15-30	168	2	+3		
44,500	at Boston College	16	21-66	3.1	26-46	226	1	13	41-167	4.1	9-22	79	0	-5		
70,932	† Navy	24	51-230	4.5	15-19	110	1	11	45-178	4.0	3-14	64	1	-4		
80,795	Syracuse	16	28-41	1.5	22-41	291	2	18	36-170	4.7	14-26	147	2	+2		
90,689	at USC	4	27-50	1.9	11-22	41	4	22	33-175	5.3	23-33	274	2	0		
45,718	at Hawaii	23	34-65	1.9	24-28	413	2	22	19-32	1.7	28-44	326	8	+2		
TOTALS		250	436-1426	3.3	271-447	3190	22	232	430-1744	4.1	228-422	2544	26	-3		
AVERAGES		19.2	34-110	3.3	21-34	245	4.9%	17.8	33-134	4.1	18-32	196	6.2%	-0.2		

ND Pre-#	2004 RESULTS	Post-#	ND Pre-#	2005 RESULTS	Post-#	ND Pre-#	2006 RESULTS	Post-#	ND Pre-#	2007 RESULTS	Post-#	ND Pre-#	2008 RESULTS	Post-#		
Rank	Opponent	Line	Score	Rank	Opponent	Line	Score	Rank	Rank	Opponent	Line	Score	Rank	Opponent	Line	Score
-	at BYU	-5	17-20	-	at Pittsburgh - #23	+3	42-21	#2	at Georgia Tech	-6	14-10	-	at San Diego St	-21	1-13	
-	Michigan - #8	+12	28-20	#20	at Michigan - #3	+7	17-10	#4	Penn St - #19	-8	41-17	-	Michigan	+2	35-17	
-	at Michigan St	-3	31-24	#10	Michigan St	-6	41-44 OT	#2	Michigan - #11	-5	21-47	-	at Michigan St	+8	7-23	
-	Washington	-11	38-3	#16	at Washington	-12	36-17	#12	at Michigan St	-3	40-37	+10	Purdue	-1	38-21	
-	Purdue - #15	+2	16-41	#13	at Purdue - #22	+3	49-28	#12	Purdue	-14	35-21	+21	Stanford			